

YANCO AGRICULTURAL HIGH SCHOOL



**2024 SCHOOL
PROSPECTUS**

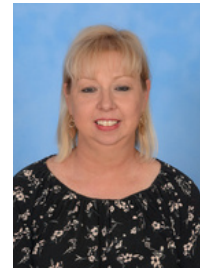
PRIDE - RESPECT - RESPONSIBILITY

Message from the Principal

It is with pleasure we respond to your enquiry about our school. We hope that the enclosed information will assist you in making your decision.

If you would like more details on any aspect of the school, or if we can be of further assistance, please do not hesitate to contact the school.

If you would like to view our facilities, please contact us to arrange a mutually convenient time for you to visit.



Marni Milne
Principal

About Us

Situated 15kms from Leeton in the heartland of the Murrumbidgee Irrigation Area, Yanco Agricultural High School provides co-educational, agricultural and residential education for approximately 300 students in a historic rural setting on the former North Yanco Estate where pioneer pastoralist/irrigator, Sir Samuel McCaughey, established one of the finest homestead residences in Australia. The historic homestead building is a feature of the school and is now used for administration purposes. As one of the NSW Department of Education and Communities three Residential Agricultural High Schools, Yanco caters especially for 'geographically isolated' students in a number of ways.

- Year 7 students who are geographically isolated are given preference for places available. Students must apply in Year 5 through the Selective Schools Unit for entry into Year 7. Students applying for vacancies in Years 8 to 12 are also given preference if isolated. There is also an early entry process for Year 7 based on interview, school reports & Naplan results.
- At the present time, the NSW Government provides Boarding Scholarships for Isolated Students to assist students from rural areas who are disadvantaged by a low family income and geographic isolation. Applications from families or students in receipt of Assistance for Isolated Children, ABSTUDY or Youth Allowance from Centrelink will not be considered for Boarding Scholarships for Isolated Students. Selection committees will take into account the amount of other educational assistance received by families when allocating priorities to applications.
- After school hours programs are provided to meet the needs of rural students in a number of different areas – school library services with information technology facilities on weeknights and at weekends; a range of sporting and recreational programs in both team and individual sports integrate where possible our students with the local community of Leeton. Specialist activities in the form of beef cattle, sheep, equine and poultry show stock; pony club rallies, Venturers, Scouts & music tuition using trained tutors. Individual tuition in specialist areas can be catered for by accessing local tutors for academic subject coaching, specialist sports coaching, dance, vocal and voice training and public speaking.

About Us

- Links with the local TAFE enable the curriculum to be significantly broadened to include specialist rural and vocational courses. These courses may have costs associated with them.
- With the co-operation of the NSW Department of Transport, special transport services in the form of coach travel are provided to designated centres throughout southern and central NSW along routes that service our school families. Where individual travel is required in addition to the above, links with normal transport services are made ensuring that appropriate travel to and from home for designated leave weekends and at the beginning and end of term, is available.

All these points aim to cater for residential students from isolated rural communities where daily or weekly access to the academic, social, recreational and cultural programs from their homes are limited, or place huge demands on busy parents who have to travel extensively otherwise.

Since becoming co-educational in 1993, the school caters for the whole family. The school has maintained the best of the traditions of past years and with the changing nature of the school and the changing composition of its population, valuable new traditions and practices are being established. The provision of sound student well being programs in a caring and supportive environment continues to be a premium.

The 290 hectares on the Murrumbidgee River provides a calm and familiar environment for rural students who seek to learn and live at Yanco. The school, farm and hostel continues to provide a fully academic and practical education where there is an emphasis on agriculture in its residential setting.

The academic and sporting traditions of Yanco are long and extensive. The school has achieved a measure of success in public examinations and competitions. Graduates from the school are prominent in all walks of life. Its sporting teams have won local and State competitions over many years including the Buchan and Wiburd Shields in Rugby Union and the University Shield, on six occasions, in Rugby League. Many Yancoians pursue futures in agriculture and related areas.

As a consequence to these endeavours, Yanco Agricultural High School continues to be held in high esteem by the community of NSW. Considerable involvement in community activities continues to be a mark of present and past Yancoians.

Marni Milne
Principal

AGRICULTURAL - RESIDENTIAL - COEDUCATIONAL

*Catering for the needs of rural families by offering quality
Secondary Education for all*

AN AFFORDABLE ALTERNATIVE!

Vision and Guiding Values

The **VISION** for the development of our students is:

In a caring residential environment, students are encouraged to achieve their potential to become effective contributors in their communities and society within a dynamic and complex world. Affirming the best of the schools traditions, our aim is to provide a well-balanced and diverse educational program with a focus on agricultural pursuits.

The **GUIDING VALUES** for the development of our students are:

- a love of learning and a search for knowledge
- an appreciation of effort, enterprise and excellence
- the recognition of the achievement of others
- that greater success comes through co-operation and teamwork
- the virtue of self-discipline
- a concern for the rights, beliefs and welfare of others
- a respect for the environment
- courtesy, honesty and trustworthiness
- recognition of the importance of personal health and hygiene
- the concept of self-worth

At our school we encourage all students to develop:

SCHOLARSHIP - CITIZENSHIP - SPORTSMANSHIP -
PERSONAL INTEGRITY - RESPONSIBLE LEADERSHIP

School Contact Information

Phone:	02 6951 1500
Email:	yancoag-h.admin@det.nsw.edu.au yancoag-h.school@det.nsw.edu.au
Website:	https://yancoag-h.schools.nsw.gov.au/
Address:	Yanco Agricultural High School 259 Euroley Road Yanco NSW 2705
Postal Address:	Yanco Agricultural High School Private Mail Bag Yanco NSW 2705

Educational Resources

In its "Statement of Mission" Yanco Agricultural High School is dedicated to using its many unique resources to provide the best, all round, education for its students within a stimulating environment. These resources are many and varied.

The Property

Yanco Agricultural High School historic mansion is situated on the lands of irrigation pioneer, Sir Samuel McCaughey.

The 280 hectare property features:

- 180ha of modern intensive irrigation and dryland agriculture
- 60ha of natural bushland bordered by the Murrumbidgee River
- 20ha of comprehensive facilities which includes 10ha of sports ovals, and ready access to a wide range of community resources.



Accommodation

The duty of care, "in loco parentis", exercised by all staff extends into the residential environment. Health care personnel are available in the school Health Centre and also on-call on a 24 hour per day availability. The modern kitchen/dining room and laundry are supervised by a caring staff and a variety of nutritious meals are presented.

Juniors are accommodated in dormitories and where possible seniors are provided with an individual room. Students are expected to study each evening, except Saturday, during a compulsory supervised preparation period.



Staff

Our dedicated staff are selected on their special fitness for Yanco. With strong support from the “Yanco Family” staff combine resources with an integrated educational program and extra curricular activities. These provide each student with the choice, space and the means to develop their individual potential.

Study Facilities

Supplementing our traditional teaching facilities is an extensive school Library that offers a Homework Centre run by teaching staff in addition to Prep. Specialist Music spaces, and tutors providing instruction in a wide range of instruments, support the school's Marching bands as well as recreational groups.

Art and Technology courses are also catered for with classroom spaces as well as Design and Technology work areas.

The school has a Trade Training Centre providing industry standard Hospitality Student Kitchen and a Metals & Engineering practical classroom.

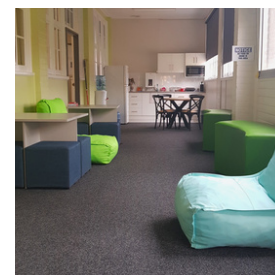
Community resources such as Leeton TAFE, and close links with the Murrumbidgee College of Agriculture provides many benefits to students.



Library



Wellbeing Hub



Wellbeing Hub

The Farm

Yanco's extensive farm resources are utilised in theory and practice. Students are rostered, to gain “hands on” experience in livestock enterprises.

The School has three livestock studs: Yanco White Suffolk Stud, YAHS Poll Merino Stud and the Yanco Shorthorn Stud. Student’s assist in the care of the stock and exhibit the stock at some of the most prestigious shows in NSW and interstate.

The farm also has a piggery, free range chickens and a teaching orchard.



Equine Centre

There is an Equine Centre including an indoor arena for students choosing to bring a horse to the school.

There are extensive stables and a number of small paddocks available for student's horses.

Students have the opportunity to participate in an interschool competition and various other events including clinics under guest instructors.

Our Agriculture teaching and farm staff are committed to provide industry relevant resources and experiences ensuring that Yanco Agricultural High School stays at the forefront of agricultural education.



Recreational Facilities & Activities

Recreation rooms are equipped with a television and other facilities. Participation in a wide range of sports is also encouraged.

Our pool, indoor & outdoor gymnasium equipment, tennis, beach volley ball, netball and basketball courts, cricket, football, and ovals provide facilities for students, while staff are eager to supervise and coach teams.

The School Library is open for extensive periods of time after school. Here students have access to a variety of recreational reading materials as well as many popular board games.

A Fishing Club is available at the school.



The school has a 33m pool onsite which is a favourite with the students.



The school is situated on the Murrumbidgee River and students may have the opportunity for supervised canoeing activities.

Recreational Facilities & Activities



There are four all weather tennis courts.



A beach volleyball court is one of the many recreational facilities.



Two gymnasium areas fitted out with exercise equipment are available for student use, along with outdoor fitness equipment.



Outdoor Recreation

There are many activities offered for students to participate in on weekends. Students enjoy outdoor activities such as mountain biking and the fishing club, as well as weekend day trips, movie nights, sport & games.



The Yanco Family

Since the early 1920's, Yanco Agricultural High School has provided residential education of a specialist nature to rural NSW and interstate families. Although students have predominantly come from the South West of the state, many have travelled from the North and Central West, coastal towns and interstate to complete their secondary education at Yanco. Metropolitan students, opting for specialist studies and the opportunity to live in country surrounds, have also found "The Ag" to be an enriching experience.

It is often claimed, by people associated with Yanco Agricultural High School, that...

"Yanco is more than a school - it's a way of life".

"Where a fierce commitment, loyalty to the school and to one another, are features of this experience. Students, teaching staff, hostel and administration personnel, parents and Old Yanconians share this commitment in a manner that is rare to find elsewhere, and is epitomised in the expression "the Yanco Family".

Features of this involvement include:

- The esprit de corps among students
- The commitment, and involvement, of teaching and hostel staff to provide a challenging curriculum meeting the needs of all students
- The Duty of Care placing a premium on student wellbeing
- Supportive parents in an incorporated P & C Association
- The "Old Yanconians" offers an alumni which meet regularly for reunions.

The communities of Yanco and Leeton add to the strength given to the school by the students, staff, P & C and Old Yanconians. Students are important members of the local community and are encouraged to be part of the recreational, sporting, cultural and social life of these towns.

The "Spirit of Yanco" quickly becomes apparent to people who know past or present Yanconians. It involves a pride in the school, commitment, mateship, initiative, cooperation, tenacity, camaraderie, and recognition of the worth of one another as individuals, or as members of a group.

Becoming a "Yanconian" will introduce students and parents to "The Yanco Family" that offers significant support, camaraderie and fellowship throughout, and following, the time these young men and women live and learn at Yanco.



Our Origins

In 1900, the wealthy farmer and grazier, Sir Samuel McCaughey, bought North Yanco Station. He was very interested in irrigation farming. At North Yanco he dug over 300 kilometres of channels to bring water to thousands of hectares of farmland. His success led to the creation of the Murrumbidgee Irrigation Area.

Sir Samuel died in 1919. His land was eventually given to the NSW Department of Education. As there was no High School in the area, a number of Leeton people asked the Government to set up as a school which would train young people as farmers. New South Wales already had an Agricultural High School near Sydney (Hurlstone), and the Minister for Education, Mr Tom Mutch, was keen to see another created. As a result, Yanco Agricultural High School was opened in 1922.



During the first three years, staff and students found life at Yanco very difficult. Following McCaughey's death the grounds became overrun with weeds and snakes. The only large building, McCaughey's red brick homestead, was used for dormitories and classrooms. Hurricane lamps provided light and some meals were cooked on a fire in the yard. Equipment was limited, so students used spades and shovels to farm the land. Despite these early problems the first Principal, Ernest Breakwell, was able to leave a well operating school when he retired at the end of 1927.

Developments were made as money became available. Such as,

- The first dormitory block, Mutch House, which included a dining room, was built in 1927. Our school hall was also provided at that time.
- The present class block was built in the late 1930's.
- Gardiner and Breakwell Houses and sick bay were constructed in the early 1960's.
- Parents and former students, raised money to build the swimming pool, tennis courts, barbeque and gymnasium.
- Finally, Hindmarsh House and Year 12 private rooms were built in 1975 and the new Kitchen/Dining room was added in 1988.
- The girl's dormitory block (Mason House) was added in 1994 along with a new class block with specialist Art and Music rooms, Staffrooms and additional teaching spaces.
- The T.A.S. (Technology & Applied Science) block completed an extensive building program associated with the school's move to co-education.
- Work on a new girls' dormitory and refurbishment of existing dormitories will take place in 2023/24.



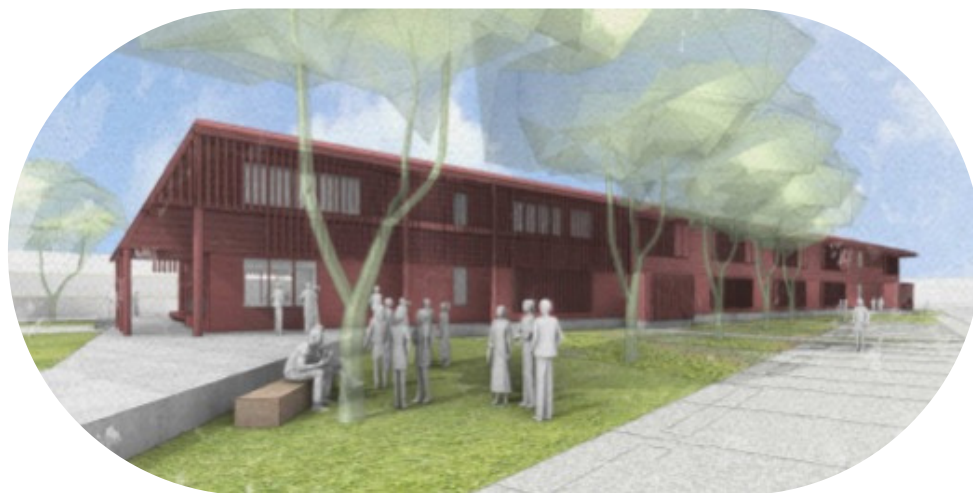
2023-24 Building Program

2023 realised the commencement of the building of a new female dormitory and upgrades to existing dormitories.

The new permanent accommodation facilities will replace female boarding accommodation in temporary buildings at Yanco Agricultural High School.

The new female boarding facilities include:

- two-storey building with 86 beds
- single bed and five bed dormitories
- equitable living
- private courtyard
- two key staff residences
- two spacious common rooms on each floor
- amenities and laundry spaces
- storage



New female dormitory

The partial refurbishment of existing permanent boarding accommodation facilities will include:

- enlarged Level 1 common room at the Mutch Building for greater natural light.
- conversion of dorm to seven bed dorms in both Gardiner and Breakwell buildings.
- improved ground access to Hindmarsh building and Level 1 and Level 2 building improvements.
- minor building improvements in the Mason building.

Care of Students

Student Wellbeing

At Yanco our emphasis in relation to wellbeing is to treat each student as an individual, endeavouring to meet each student's personal and social needs, and to enhance their well being. Our policies and activities reflect this awareness, of our role in pastoral care.

Pastoral Care

Is provided through a network of staff and outside organisations. All staff are willing to listen to, and help, individual students. In addition, students with problems can talk to their Year Adviser, the Girls' Supervisor, Head Teachers Welfare (Boys and Girls), Counsellors, Student Support Officer (SSO) as well as the School Principal, and Deputy Principals.

Student Leadership

We are proud of our achievements in developing student leadership skills. Opportunities, and training, are provided for students to progressively assume more leadership roles within the school. These include the responsibilities of Dormitory Prefects, Peer Support Leaders and Student Representative Council members, as well as the opportunity to be a captain, coach or manager of a sporting team.

Our Wellbeing System

Yanco Agricultural High School's core values are pride, respect and responsibility, and it is these, which shape our Positive Behaviour for Success program.

These core values also underpin our discipline processes by educating students about these values and providing opportunities for students to reflect upon these, it is hoped that we support and develop successful and well-rounded individuals.

Meals

Prepared in our modern Dining Room are to be both nutritionally balanced, and appealing to students. Special dietary needs are also catered for by the dedicated kitchen staff.

Care of Students

Medical Attention

Is provided on a daily basis by trained health staff with Health Centre facilities. More serious cases are referred to local doctors in Leeton, or to the Leeton District Hospital.

Students are taken to Leeton for dental care.

Supervision

Flats attached to dormitory blocks allow “live in” residential staff to provide 24 hour passive supervision of students.

Active supervision is provided by teams of rostered Duty Staff every day.

Uniform

Correct uniform is expected to be worn at all times during the school day. We always encourage students to take pride in their uniform and in themselves.

Details of uniform requirements are included in this booklet.

Leave

All leave for students is entered and processed through the leave app REACH Boarding.

Travel

Travel arrangements for our designated leave weekends are organised by school transport.

Term breaks are organised by school transport with the exception of Term 2 and Term 4, which are to be arranged by parent/ carers.

CountryLink Coaches are available for designated leave weekends and Term 1 & 3 and leave directly from YAHS transporting students to arranged destinations. Free Rail passes are available for students travelling home only, on weekends.

Student ID cards for students 16 years and over are available from the Travel Office.

Student Activities

Students at Yanco Agricultural High School have access to a range of quality sporting, cultural and recreational activities. These enable productive use of a student's time after school, and also engender strong leadership qualities and co-operation with others. The students are currently able to participate in the following extra curricular activities - Scouts, Australian Rules Football, Town Band, Basketball, Cadets, Cricket, Dancing, Girl Guides, Hockey, League Tag, Little Athletics, Karate, Netball, Rugby League, Rugby Union, Rural Fire Service Cadets, Soccer, Squash, Swimming Squad Training, Taekwondo, Touch Football, Gym, Dance and Music. Students have opportunities to enjoy a variety of activities at Yanco such as the annual Year 11 Ski Trip and annual school excursions. There are also opportunities for weekend excursions.

Sport

Yanco has a proud, and highly successful record in sporting achievements. We have a statewide reputation for achievement at the higher levels in Rugby League, Rugby Union, Girls Brumbies Rugby Union Squad and Australian National Football. Success is also enjoyed in Basketball, Hockey, Squash and Equestrian events. Students also enjoy using the school pool, where they can train, undertake lifesaving awards, or just relax. Tennis, beach volley ball, basketball and netball courts, as well as the Gym and numerous playing fields, add more variety to the opportunities available for students' recreation.



Cultural

In the cultural arena, Yanco boasts a school Drum Corp. Music lessons in a wide range of instruments are offered, and students are given opportunities to compete in the local Eisteddfod. Students can have direct input into the running of the school through their Student Representative Council, or brush up on their oral skills by participating in Debating and Public Speaking competitions.



Academic Excellence

Yanco offers a wide variety of subjects to cater for a range of student abilities. The diversity of study programs available ensures that talented students through to students with learning difficulties can be placed in classes appropriate to their needs.

Senior Curriculum

Senior curriculum may provide courses in:

English - English Standard, Advanced, Extension 1, English Studies

Mathematics - Standard 2, Advanced, Extension 1 & 2, Numeracy

Science - Physics, Chemistry, Biology, Investigating Science

Electives -

- Agriculture
- Industrial Technology
- Food Technology
- Textiles & Designs
- Economics
- Ancient History
- Modern History
- PDHPE
- Sport, Lifestyle & Recreation
- Visual Arts
- Geography
- Business Studies
- Music 1
- Legal Studies

Vocational Education Training Courses

- Certificate III in Agriculture (360 hours)
- Certificate II in Agriculture (240 hours)
- Certificate II in Hospitality (240 hours)
- Certificate III in Fitness (240 hours)

The facilities of TAFE, Riverina Field Studies Centre, Murrumbidgee College of Agriculture and Charles Sturt University are used to supplement our own educational programs. Subjects offered are dependent on student choices.

Junior Curriculum

Our Junior Curriculum combines a variety of core and elective subjects. In addition to the core subjects, Year 7 study LOTE (Language Other than English) and both Year 7 & 8 study Music, Art and Technology Mandatory. Careers - is mandatory for Years 9 & 10.

Core subjects for Years 7-10 are:

- English
- PDHPE
- History
- Mathematics
- Agriculture
- Science
- Geography

Elective subjects for Years 9-10 that may run are:

- Commerce
- Industrial Technology - Metals
- Visual Arts
- Food Technology
- Industrial Technology - Timber
- Textiles Technology
- Geography (Elective)
- Marine & Aquaculture Technology
- Music
- History (Elective)
- Physical Activity & Sports Study

*Animal Studies: Sheep Husbandry & Wool Sciences

*Animal Studies: Equine Studies

*Students are only able to select ONE of the elective Animal Studies courses.

Academic Excellence



Students participate in a wide range of practical lessons - Agriculture, Animal Management & Primary Industries subjects.

An industry standard kitchen classroom is available for the studies of Food Technology, Technology Mandatory & Certificate II in Hospitality.

Well equipped learning spaces are available for all subjects.

Variety & Diversity in Yanco's Program

- Work Experience for Year 10 students within a Careers Education program.
- Courses in First Aid in conjunction with the St. John Ambulance.
- After "school hours" access to our extensive Library Resource Centre. A program of agriculture experiences through practical application. Show Stock teams which prepare cattle, sheep, poultry and horses for the Royal Shows in Sydney, Melbourne and Canberra and local shows. Visits to the school by performing Arts/Drama groups.
- The provision of preparation and study time each weeknight under the supervision of staff, while senior students study in their own rooms.
- Excursions across all subject areas.
- Public Speaking, and Debating activities.
- The involvement of students in external competitions for English, Mathematics and Science.

Regular reporting to Parents on Student progress is emphasised.

Written reports are issued at the end of Terms 2 and 4

Parent-Teacher Interview days are organised in Term 2 for parents to discuss their Student's progress with staff. We also encourage parents to contact the school at any time regarding student progress.

Year Advisors can organise a Student Progress Report or an Interview schedule with your student's teachers.

Show Stock Teams

Yanco Agricultural High School Show Stock Teams successfully participate in Royal Shows, local shows and inter-school competitions.

The School has Show Stock Teams for cattle, sheep and poultry and also an Equestrian Team.

Students are actively involved in the school's three studs which consist of a cattle stud and two sheep studs.

The cattle stud is called Yanco Shorthorns, whilst the sheep studs are Yanco Poll Merinos and Yanco Suffolk.

The students run an annual ram sale which has been a major fundraiser for the school.



Uniforms

Male Uniform

Summer Uniform <i>Suggested quantities</i>	Price per item	Winter Uniform <i>Suggested quantities</i>	Price per item
3 x Blue Polo Shirts 3 x Khaki Shorts 5 x Khaki Socks 1 x Truckers Cap or 1 x Bucket Hat Leather Shoes or WorkBoots	\$30.00 \$45.00 \$8.00 \$25.00 \$20.00	3 x Khaki Pants 2 x Long Sleeved Polo Shirts 1 x School Jumper Junior - Grey Senior - Royal Blue 1 x All Weather Jacket 1 x Sleeveless Vest (Optional) 1 x Black Leather Lace Up Shoes or Black elastic sided dress boots	\$70.00 \$30.00 \$80.00 \$80.00 \$75.00 \$45.00
Sport Uniform <i>Suggested quantities</i>	Price per item	Formal Uniform <i>Suggested quantities</i>	Price per item
1 x House Polo Shirt 1 x Sport Short Canterbury 1 x Sports Short Midford 3 x White Sport Socks 1 x Sport Shoes 1 x Swimming Shorts 1 x Bag for PE Gear	\$20.00 \$45.00 \$25.00 \$22.00	1 x Formal Grey Trousers 1 x Long Sleeved White Shirt 1 x Belt 1 x School Tie Junior/ Senior 1 x Akubra 1 x School Blazer (Hire) 1 x Grey Socks 1 x Black Shoes (not boots)	\$65.00 \$26.50 \$15.00 \$30.00 \$135.00 \$50.00
Practical Uniform <i>Suggested quantities</i>	Price per item	Stock Uniform - Year 7 & 8 <i>Suggested quantities</i>	
2 x Khaki Pants 2 x Practical Shirt 1 x RB Sellars Jumper	\$55.00 \$43.00 \$75.00	1 x Set Farm Clothes 1 x Gum Boots 1 x Elastic Sided Work Boots	
Travel Uniform <i>Suggested quantities</i>			
1 x Blue Polo Shirt 1 x Plain Straight Leg Blue Jeans	\$30.00	There is also a range of pre-loved uniform items available at reduced prices.	

Uniforms

Female Uniform

Summer Uniform <i>Suggested quantities</i>	Price per item	Winter Uniform <i>Suggested quantities</i>	Price per item
2 x Summer Dress 1 x Truckers Cap or 1 x Bucket Hat Black Leather Lace up shoes 3 x White Socks <i>Or Second Option -</i> 2 x Khaki Shorts 2 x Blue Polo Shirt 5 x Khaki Socks	\$75.00 \$25.00 \$20.00 \$22.00 \$40.00 \$30.00 \$8.00	2 x Checked Winter Skirts 3 x Long Sleeved White Shirts 1 x School Jumper Junior - Grey Senior - Royal Blue 4 x Navy Tights 1 x All Weather Jacket 1 x Sleeveless Vest (Optional) 1 x Black Leather Lace Up Shoes	\$80.00 \$26.50 \$80.00 \$80.00 \$8.00 \$75.00 \$45.00
Sport Uniform <i>Suggested quantities</i>	Price per item	Formal Uniform <i>Suggested quantities</i>	Price per item
1 x House Polo Shirt 1 x Sport Shorts Midford or 1 x Sport Shorts Canterbury 2 x White Sport Socks 1 x Sport Shoes 1 x One-piece Swimsuit 1 x Bag for PE Gear	\$20.00 \$25.00 \$45.00 \$22.00	1 x Formal Grey Skirt 1 x Long Sleeved White Shirt 1 x School Tie Junior/ Senior 1 x Ivory Braid Hat 1 x School Blazer (Hire) 1 x Nude Stockings 1 x Black Shoes (not boots)	\$70.00 \$26.50 \$30.00 \$45.00 \$50.00 \$10.00
Practical Uniform <i>Suggested quantities</i>	Price per item	Stock Uniform - Year 7 & 8 <i>Suggested quantities</i>	
2 x Khaki Pants 2 x Practical Shirt 1 x RB Sellars Jumper	\$75.00 \$43.00 \$75.00	1 x Set Farm Clothes 1 x Gum Boots 1 x Elastic Sided Work Boots	
Travel Uniform <i>Suggested quantities</i>	Price per item		
1 x Blue Polo Shirt 1 x Plain Straight Leg Blue Jeans	\$30.00	There is also a range of pre-loved uniform items available at reduced prices.	



Formal



Practical



Summer



Winter



House Colours for Sport Carnivals



All PE Uniform

Other School Requirements

Male & Female

Personal Items

2 pairs of pyjamas
 2 sock & underwear bags (from Canteen)
 Toiletries
 (NO SPRAY CANS ALLOWED)
 4 bath towels
 2 pairs of sheet - king single size 1 pillow
 3 pillow cases
 Doona & 2 covers
 Suit cover bag

Underwear

10 underpants

Weekend Casuals

Jeans, T-shirts, shorts, tracksuits, etc (as necessary)

Other Items

Fx 82 AU + II calculator (engraved with name)
 Dictionary
 School bag
 Casual clothes
 Comb/hairbrush
 Thongs
 Torch
 Safety pins
 Needle & thread
 Beach towel
 1 laundry basket
 2 laundry wash bags (for underwear)
 Toiletry bag
 Laundry marker
 10 coat hangers
 Alarm clock
 Handkerchiefs
 Shoe polishing kit
 Wallet for ID cards & bus/rail tickets
 2 containers for storing snacks

School bags, book packs, math sets, Fx82AU+II calculators, atlas, stationery and toiletries are available from the School Canteen.

Some lockers will require a 40cm chain as well as a lock.

ALL CLOTHING, LINEN, ETC SHOULD BE CLEARLY MARKED WITH STUDENT'S NAME

(Iron-on name tags must also be sewn on as they come off in the dryers)

Students will **NOT** be allowed to bring any electrical item to school **UNLESS** these items are *tagged* and *tested* by an authorised electrician. Tag & testing is also available through the school for a fee.

How to Enrol

Year 7

Applications are made online through the Selective Schools Unit during Term 4 of the year the student is in Year 5. Further information on the Year 7 Selective Schools application can be found at:

<https://education.nsw.gov.au/public-schools/selective-high-schools-andopportunity-classes/year-7>

The Selective Schools Unit can also be contacted on 1300 880 367.

The Secondary Schools Entrance Test is held in Term 1 or Term 2 of the year the student is in Year 6.

Determination of placement offers will be made by a selection review panel.

Years 8 to 11

Students entering Years 8 to 11 make application directly to the school. Application forms are available from the school towards the end of June and close at the end of July. A letter will be enclosed with the application form advising of the additional documents required. Please contact the school for an application package.

An interview will be arranged for applicants during Term 3 and the outcome advised as soon as all interviews have been completed.

All interviews are held in person at the school. A tour of the school may be conducted on the day of the interview

Transition Program

Once you are accepted as a student at Yanco Agricultural High School, you will be invited to our transition program. It is important to bring the following information with you:

- Your Bank Account number to complete the Private Vehicle Subsidy Forms
- Your Medicare number or Health Fund details
- The distance, in kilometres, from your home to the school (by car)
- The distance from home to the transport pick-up point (must be more than 1.6km)
- Details of your child's medical history, including childhood vaccinations.

General Information

It is important to advise us of any special circumstances affecting your child. These could include:

- Changes in the family situation.
- Change of address and/or phone.
- Dietary requirements.
- Custody arrangements.
- Medical problems.
- Emergency contact arrangements if you will be away from home.

Schedule of fees and charges 2024



Public Education - No tuition fees

Boarding Fees - Centrally Billed

Enquiries: Contact EdConnect 1300 32 32 32

Payment Options: via BPAY (details will be on statement)

- Years 7-11 Fulltime - \$3,315.00 per term (over 4 terms)
- Years 7-11 Weekly - \$2,897.00 per term (over 4 terms)
- Year 12 Fulltime - \$4,420.00 per term (over 4 terms)
- Year 12 Weekly - \$3,863.00 per term (over 4 terms)

School Fees - Charged by School

Enquiries: Contact School 02 6951 1500

Payment Options: Schoolbytes, Cash or Cheque

- Local Transport Fee - \$720.00 (3 x \$240 per term) per student/year
- Technology Levy - \$740.00 per year
- Horse Agistment/ Stabling - \$1,400 per term

Subject Contribution Fees (Charged Term 2)

Years 7-8	Per Year
Art	\$40.00
Mandatory Technology	\$50.00
Years 9-10	Per Year
Visual Arts	\$20.00
Food Technology	\$125.00
Music	\$10.00
Agriculture Studies: <i>Sheep Husbandry and Wool Science</i>	\$115.00
Agriculture Studies: <i>Equine Studies</i>	\$115.00
Industrial Technology: <i>Timber/ Metal</i>	\$115.00
Textiles Technology	\$65.00
PASS	\$30.00

Year 11 - 12	Per Year
Industrial Technology: <i>Timber/ Metal</i>	\$100.00
Cert II in Hospitality <small>(Purchase own uniform & toolbox)</small>	\$200.00
Primary Industries (VET) <i>Cert II - Agriculture</i>	\$110.00
Primary Industries (VET) <i>Cert III - Agriculture</i>	\$155.00
Advanced Equine Studies	\$110.00
Music 1	\$10.00
Food Technology	\$140.00
Textiles & Design	\$80.00
Design & Technology	\$100.00
Certificate III in Fitness	\$150.00
Visual Arts	\$50.00

Scholarship & Allowance Information

Federal Assistance for Isolated Children's Allowance

This Scholarship assists eligible students from rural areas who are disadvantaged by a low family income and geographic isolation. Applications for students who receive Assistance for Isolated Children, ABSTUDY or Youth Allowance from Centrelink will not be considered. The scholarship will assist a student who:

- Wishes to attend and board at a NSW government agricultural high school.
- Wishes to attend a specialist NSW government secondary school that conducts selection procedures and who would need to board away from home to do so.
- Needs to board at a school term hostel to access a NSW government secondary school.
- Further information is available from Centrelink.

Boarding Scholarships for Isolated Students

A student is eligible if one of the following rules is met:

- Home is at least 56km from the nearest government school
- Home is at least 16km from the nearest government school and at least 4.5km from the nearest government transport service to that school
- The student does not have reasonable daily access to the school for at least 20 days of the school year or the return journey to school exceeds three hours travelling time.

If the student meets one of the above rules, they are eligible for a non means tested

- Boarding Allowance. There is no assets testing on this allowance.

Further information can be found at:

https://education.nsw.gov.au/content/dam/main-education/teaching-and-learning/curriculum/rural-and-distance-education/documents/BSIS_Application_Form_2023.pdf

https://education.nsw.gov.au/content/dam/main-education/teaching-and-learning/curriculum/rural-and-distance-education/documents/BSIS_Application_Form_2023.pdf

<https://icpa.com.au/nsw/>

NSW Department of Education

Living away from home allowance (Means Tested)

Criteria

- Meets the means test
- Home is at least 48km from the nearest government school

Note: A student who does not meet the 48km rule and cannot study Agriculture at their local school in the required grade may be deemed eligible for the allowance if they take two agricultural subjects.

A student may receive the Assistance for Isolated Children as well as the NSW Living Away from Home Allowance if they meet both criteria's. Family Tax Benefit will be paid for a student in receipt of Living Away from Home Allowance.

Further information is available from Centrelink.

Youth Allowance

A student cannot receive Assistance for Isolated Children or Abstudy as well as Youth Allowance.

You can receive Youth Allowance and Living Away from Home Allowance.

Youth Allowance is means and assets tested. In addition, if the family is in a partnership, trust or company, they are also subjected to an Actual Means Test.

Youth Allowance starts from the date the application is received. It will not be backdated.

Apply approximately two weeks before the students 16th birthday.

If eligible for \$1 a week Youth Allowance, you are then eligible for Rent Assistance based on the rent payable. In boarding schools this relates to two thirds of the boarding fee.

- Actual means test determines the level of support available to the students.
- Youth Allowance is paid fortnightly and cannot be paid by the term in advance.
- Family Tax Benefit will not be paid for a student in receipt of Youth Allowance.
- Further information is available from Centrelink.

ABSTUDY

Provides financial assistance to students identified as Aboriginal or Torres Strait Islander. Travel and other special assistance is also available to eligible students. State that the child is at Boarding School.

Further information is available from Centrelink.

Bush Children's Education Foundation

These bursaries are structured to supplement the financial assistance provided by the NSW and Commonwealth Governments. These include the Assistance for Isolated Students, Youth Allowance, Living Away from Home Allowance and Boarding Scholarships for Isolated Students. There are three types of assistance for secondary school students:

Application criteria:

Geographic isolation from schools and services

Family income and assets. The latest available Australian Taxation Office Notice of Assessment must be forwarded with the application form. Do not send the tax return.

Other special and exceptional circumstances including medical cases

Students from remote border areas (VIC, SA and QLD) may apply but must attend a country school in NSW.

For further information:

<https://www.bcef.org.au/>

A start in Life

Provides assistance to low income families to cover the cost of their school essentials. Assistance includes, but is not limited to supplying:

- School fees
- Tutoring & coaching
- Sports & Music Equipment
- Excursion Costs
- Uniforms
- School Photos
- Medical tests (exceptional circumstance only)
- Computers
- Regulation school shoes Books & Stationery

Every application for assistance is assessed against criteria, so the program assists those young people who are truly in necessitous circumstances.

For further information & application please follow the link below:

<https://www.astartinlife.org.au/>

Student Assistance Grant

Funds are made available to the school for students in need. A grant of \$100.00 per student is available for such items as school uniforms, school stationery, excursion costs, specific subject costs (eg Technics, Art, Hobbies, etc), costs related to school activities (eg Duke of Edinburgh Awards, sporting competitions, representative sports travel etc).

All applications for payment should be made in writing, through the Principal and will be treated on a confidential basis. A committee consisting of the Principal, selected staff members and parents will consider all applications for assistance.

Private Vehicle Conveyance Subsidy

This is paid by the NSW Department of Transport for a student's one way trip to school. A variable amount is paid into parents' bank account at the end of Semester One and Semester Two. To ensure payment of this subsidy, please apply at the School Travel Office.

YAHS Old Yanconians Foundation LTD

The YAHS Old Yanconians Foundation offers a range of scholarships including some specifically for rural and indigenous students.

Please visit the following website for further information.

<https://yanconiansfoundation.com.au/>

School Contact Information

Phone: 02 6951 1500
Email: yancoag-h.admin@det.nsw.edu.au
yancoag-h.school@det.nsw.edu.au
Website: <https://yancoag-h.schools.nsw.gov.au/>

Address: Yanco Agricultural High School
259 Euroley Road
Yanco NSW 2705

Postal Address: Yanco Agricultural High School
Private Mail Bag
Yanco NSW 2705



“As you sow, so shall you reap”