



Yanco White Suffolks



**Second Annual On – Property Ram Sale
11:00am Thursday, 14th September 2017**

37

**WHITE SUFFOLK
PERFORMANCE RAMS**

**YANCO AGRICULTURAL HIGH SCHOOL
259 Euroley Road, Yanco, 2703**



2016 Year 10 Animal Management with their rams at the Inaugural Yanco White Suffolk Performance Ram Sale



2017 fat and muscle scanning of ram and ewe lambs with Year 10 Animal Management

YANCO
WHITE SUFFOLKS
SECOND ANNUAL ON-PROPERTY
WHITE SUFFOLK RAM SALE
(Est. 2003, Flock No. 524)

37 RAMS

Held undercover in the Col Brown Showstock Centre

Yanco Agricultural High School

259 Euroley Road, Yanco, 2703

Thursday 14th September 2017

Inspection 9:00 am

Sale 11:00 am

Please bring this catalogue to the sale.

Inspection prior to sale is most welcome.

Web site: <http://www.yancoag-h.schools.nsw.edu.au/agriculture-and-equine/yanco-white-suffolk-stud>

Contact: Ellie Quinn
Business Hours: (02) 69511500
After Hours: 0429317738

Sale Information

PRE – SALE INSPECTIONS:

The rams will be penned and available for inspection by 9:00am on the morning of the sale. Inspection prior to the sale day is most welcome and can be arranged by contacting Ellie Quinn at school on 02 69511500.

RAM HEALTH:

Yanco's White Suffolk Stud (Flock No. 0542) is an:

Accredited Ovine Brucellosis Free (Cert. No. Y748) Expiry: 30/04/2018
Accredited Ovine Johne's Disease MN3V (NS13071) Expiry: 30/04/2018
A vendor declaration will be supplied for: Footrot Status and Lice
Booster vaccination: 21st June 2017
Shorn: 22nd June 2017
Veterinarian Checked: General health within a week of the sale
(MiVet Veterinary Clinic)

REFRESHMENTS:

Complimentary morning tea and lunch provided.
Lunch will be loin chops and hot roast lamb rolls with caramelised onion, gravy and mint jelly. The lamb being served is grown by the school and served by the students. Soft drinks will also be provided.

PARKING:

Parking will be in the main car park accessible down McCaughey Drive. Clients will then be guided by students to the Col Brown Showstock Centre, or buses will be available in the event of rain. At the conclusion of the sale clients may access the back Service Road entrance to pick up their rams.

REMINDER:

The sale is held on a Department of Education site and therefore smoking is not permitted.

AGENTS:

Elders Narrandera - Dominic O'Mahoney
137/149 Audley Street, Narrandera
Telephone: 02 69599092 Fax: 02 69594891
Email: narrandera@elders.com.au
Mobile: 0408 622 195

Breed and Hutchinson – Tim Hutchinson
53-55 Pine Avenue, Leeton
Telephone: 02 69532555 Fax: 02 69532190
Email: sales@breedandhutchinson.com.au
Mobile: 0427 931 533

Please remember to bring your PIC number to the sale for ease of transfer.

Welcome to Yanco's Second Annual Ram Sale 2017

Welcome to the Second Annual Yanco White Suffolk Performance Ram Sale. Highlights of 2016 and 2017 include:

- In 2016, Year 10 Animal Management was involved in our first Embryo Transfer program, travelling to Jerilderie to watch the donor ewes' flushing. A total of 28 viable embryos were recovered. The rams from this program are featured in the catalogue and have been used as sires.
- In September 2016, Year 10 Animal Management hosted our first ram sale, clearing a total of 41 rams at an average of \$893 and a top of \$1500. This enabled the school to purchase a new direct drill seeder, to further our pasture improvement program.
- Students in Year 9 Animal Management in 2016 assisted in selecting the sires for use in the 2017 AI program, and continued this by assisting in implementing the AI program
- All Senior Agriculture students were able to view the annual Artificial Insemination program in March 2017
- Use of technology has continued in the stud with electronic ID tags enabling easy data collection. DNA 12K SNP chips have been taken of 20% of ram lambs to improve accuracy of ASBVs and measure meat eating quality traits.
- Ewes scanned at 191% in lamb with 65% of those being to the Artificial Insemination program. These are currently lambing down with the highest lamb survival rates seen in many years.

Yanco has on offer rams by leading White Suffolk Lambplan® performance sires from across Australia. These include; SuperWhites® rams Farrer 140137 and Pendarra 141655, widely used South Australian high performance sire Bundara Downs 122261, young performance sires Farrer 140019 and Pendarra 141698 and an older, widely used sire with excellent meat eating quality, Langley Heights 060073 and.

Several of our own rams from the 2015 artificial insemination program, Yanco 150006, Yanco 150043, Yanco 150047 and Yanco 150074 have bred on very well, with some excellent progeny in the sale.

Finally, thanks to the 2017 Year 10 Animal Management students who have been actively involved in the direction and management of the stud. Their contributions include; sire selection, crutching, vaccinating, drenching, regular weight monitoring and helping conduct the annual ram sale. I thank the students for their commitment, effort and interest in striving to continually improve the Yanco White Suffolk sheep and stud.

Ellie Quinn
White Suffolk Stud Manager

Yanco's Breeding Program

Using LAMBPLAN to make consistent genetic improvement.

The Yanco breeding program is centered on a sound combination of genetic principles and practical experience with the aim of breeding modern, profit making sires for commercial lamb production.

Yanco uses **LAMBPLAN** to provide accurate information on the genetic merit of individuals in our flock. In LAMBPLAN, performance and pedigree information is combined to give Australian Sheep Breeding Values. **ASBV's** are calculated from systematic combinations of performance information on individuals plus their relatives. They are expressed as the difference between an individual's genetic merit and the genetic base to which the animal is compared.

Australian Sheep Breeding Values are provided in this catalogue for NINE main traits:

- **Birth weight (BWT):** Estimates the genetic difference between animals in liveweight at birth.
- **Weaning weight (WWT):** Estimates the genetic difference between in liveweight at 100 days of age.
- **Post Weaning Weight: (PWWT):** Estimates the genetic difference between animals in liveweight at 225 days of age.
- **Fat: (PFAT):** Estimates the genetic difference in GR fat depth at 45kg liveweight.
- **Eye Muscle Depth (PEMD):** Estimates the genetic difference in eye muscle depth at the C site in a 45kg liveweight animal
- **Worm Egg Count: (PWEC):** Estimates the genetic difference between animals in worm burden at 225 days of age.
- **Lean Meat Yield (LMY):** Estimates the genetic difference in the percentage of lean meat at slaughter.
- **Intramuscular Fat (IMF):** Estimates the genetic difference between the chemical fat percentage in the loin muscle of a lamb, and is often referred to as marbling. IMF has been shown to have a significant impact on the flavour, juiciness, tenderness and overall likeability of lamb.
- **Shear Force (SHEAR F)** Estimate the genetic difference in the force or energy required to cut through the loin muscle of lamb after 5 days of ageing, the ASBV is reported in deviations of kilograms of force.

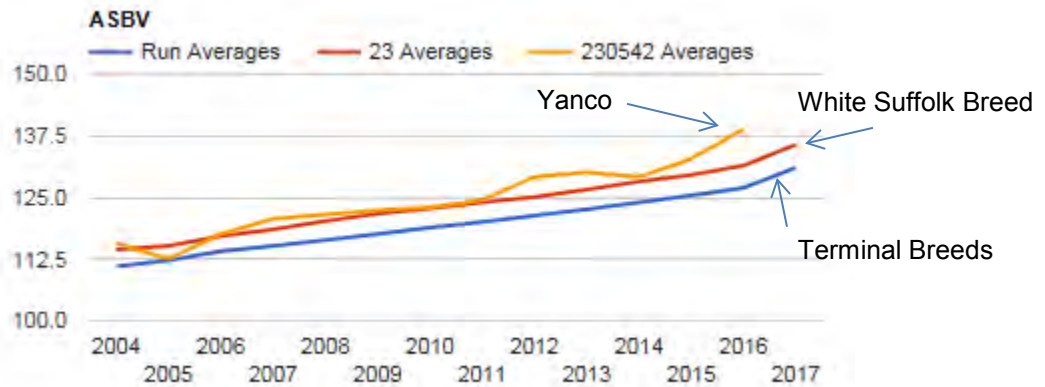
In addition the catalogue includes 1st August 2017 Lambplan index values on Lamb 2020 (L2020), Lamb2020 + Eating Quality (LEQ), Carcase Plus (C+) and Eating Quality (EQ)

LAMBPLAN reports are prepared using data supplied by breeders and/or accredited operators. **LAMBPLAN** cannot guarantee the accuracy of this data. **LAMBPLAN** ASBV's are designed to estimate genetic merit of sheep from data supplied. **LAMBPLAN** reports are provided to assist breeders but no liability is accepted for any outcomes resulting from the use of this information.

Yanco's genetic progress against the White Suffolk Breed

The graph below indicates Yanco's genetic progress compared to the White Suffolk breed average for all animals measured by Lambplan for the Lamb2020 + Eating Quality (LEQ index). 230542 (orange line) is Yanco, 23 (red line) is the White Suffolk breed and the blue line represents all terminal breeds. (Note: 2017 data has not been submitted yet). The 2016 drop of rams is the highest performing drop of rams yet, above the average for both the White Suffolk and other terminal breeds for LEQ, owing to an emphasis on improving eating quality in the breeding objective.

The Genetic Progress of Yanco White Suffolks Compared to the average of the White Suffolk breed



LEQ (LAMB2020+Eating Quality) Index Progress of Yanco White Suffolk Stud (230542)

The table below gives a summary of the genetic merit of this year's Yanco sale rams compared to the average of all terminal sire breeds (i.e. White Suffolk, Poll Dorsets, Texels, Suffolks etc.) measured by Lambplan in 2017.

Terminal Sires (1st August 2017) Australian Sheep Breeding Values

	BWT	WWT	PWT	PFAT	PEMD	PWEC	Carcase Plus	Lamb 2020	EQ	LEQ	LMY	IMF	SHEAR F5
Yanco Sale Rams	0.18	9.03	14.3	-0.4	1.85	-7.03	193.86	112.92	137.8	138.5	2.7	-0.19	0.94
Terminal Sires	0.25	8.0	12.3	-0.5	1.4	-12	180	110.8	126.5	126.9	2.64	-0.45	2.7
Difference	-0.07	1.03	2.0	0.1	0.45	4.97	13.86	2.12	11.3	11.6	0.03	0.26	1.76

Selecting an Individual Ram Using ASBVs for Your Market Specifications

Step 1. Understand your market requirements / specifications

Example:

Market Specifications: 22 - 24 Kg carcass and 2 fat score, positive muscling

Marketing Option: Over the Hook on the Grid

Dams: Medium framed Merino ewes

Step 2. Select the most appropriate ASBV's for your market requirements.

It's is **extremely important** to check the individual ASBV's to select your ram(s):

Birth Weight ASBV (BWT)

This trait is becoming increasingly important as birth weight is positively correlated with post weaning weight. This means as post weaning weight ASBV's increase there tends to be a slight increase in birth weight ASBV's. To negate this phenomenon producers should aim to select rams with lower birth weight ASBV's compared to the current years terminal sire average.

- **Weaning Weight ASBV (WWT)**
The higher the ASBV figure the better for superior earlier growth (100 days) of lambs.
- **Post Weight ASBV (PWWT)**
The higher the ASBV figure the better for superior later growth (225 days) of lambs.
- **Post Weaning Fat ASBV (PFAT)**
The general rule is the higher the growth rate of the ram the less emphasis may be placed on Post weaning fat.

Factors where **increasingly positive ASBV's** for fat are possibly required;

- Extremely lean dams e.g. Finns and East Friesians.
- Lambs have trouble "finishing" at the desired market weight
- Targeting the domestic trade market

Factors where **increasingly negative ASBV's** for fat are possibly required;

- Fatter type dams e.g. Crossbreeds
- Lambs are commonly marketed at 8 – 11 months of age
- Heavier carcass weights (24+ Kg CWT)
- Lambs often receive a discount due to excessive fat.

Note: Please ensure your selected ram(s) fit into your target market as each individual producer's requirements will be slightly different depending on their individual circumstances.

- **Post Weaning Eye Muscle Depth (PEMD)**
This trait is especially important for producers involved in over the hook (OTH) sales of elite carcasses that require a positive grade for muscling. They will need to select animals with above average post weaning eye muscle depth ASBV's compared to the current years Terminal Sire average in an effort to help meet the market specifications.

- **Post Weaning Worm Egg Counts (PWEC)**

This trait is important for producers who are concerned about worm burdens and wish to decrease their future reliance on chemicals. Select those animals with a **negative** PWEC.

Step 3. Check if an Index is appropriate to your market requirements.

Lambplan indices are developed to meet the requirements of selecting animals for different production systems. You should use the index that best suits **your** production systems, environment and market requirements.

Four of the current terminal sire indices used by LAMBPLAN are shown in the table below. This table illustrates the expected response for traits influenced by each of these indexes over 10 years.

Trait	Carcase +	EQ	Lamb 2020	LEQ
BWT (Kg)	0.15	0.06	0.07	0.07
WWT (Kg)	2.85	1.55	1.85	1.28
PWT (Kg)	4.4	3.15	2.8	2.6
PEMD (mm)	1.46	1.07	1.44	1.17
PFAT (mm)	0.14	0.04	0.59	0.33
PWEC (%)	0.06	0.16	-52.24	-35.83
CEMD (mm)	1.5	1.15	1.42	1.25
CCFAT (mm)	-0.5	-0.4	0.07	-0.12
DRESS (%)	1.31	1.09	1.1	1.03
LMY (%)	1.66	0.91	1.14	0.87
SF5 (Kg)	0.77	-2.41	0.62	-2.06
IMF (%)	-0.27	0.09	-0.14	0.1

- **LEQ index** is targeted at progressive terminal lamb producers interested in improving the meat eating quality of their prime lambs while continuing to improve production in a balanced way including Birth Weight (BWT) and Worm Egg Count (WEC). Yanco now selects and breeds using LEQ index as meat eating quality is becoming increasingly important to consumers.
- If one of the above indices is similar to your target market you can use this Index to help screen your previously selected rams. Select those with **higher** values.
- If your production system is **significantly different** (i.e. requires **positive** fat ASBV's, earlier or later turn off, lighter or heavier carcasse weights) go to step 4.

Step 4: Final assessment

The ASBV figures are important and an index (LAMB 2020, Carcasse Plus, LEQ and EQ) can be useful, but they are only a tool in helping you select the best ram(s) suited to your production system. Therefore, you should always check that the animal meets your requirements for maturity pattern, conformation and structural correctness.

Finally, remember if you are unsure **please don't hesitate to ask**.

Australian Sheep Breeding Values for Lean Meat Yield and Meat Eating Quality

Australian Sheep Breeding Values for Lean Meat Yield and Meat Eating Quality are obtained by a DNA test using a small blood sample. Approximately 20% of the rams including all rams used as sires are tested each year.

Lean Meat Yield (LMY %)

This trait is a measure of the commercial yield of lean meat as a percentage of hot carcass weight. Lean meat yield is estimated from a combination of weight, muscle and fat dimensions and has been validated by either CT scanning or through direct commercial bone-outs.

Select those animals with the most **positive** LMY.

Intramuscular Fat (IMF %)

This trait is a measure of the chemical fat percentage in the loin muscle of a lamb, and is often referred to as marbling. IMF has been shown to have a significant impact on flavour, juiciness, tenderness and overall likeability of lamb.

Select those animals with the most **positive** IMF

Shear Force (SHEARF5 kg)

This trait is a measure of the force required to cut through the loin muscle of a lamb after 5 days of ageing, and is recorded in kilograms of force. The trait has moderate / high heritability and a moderate correlation with tenderness in lamb. Thus, the most negative SHEARF5 figure indicates more tender lamb loin muscle.

Select those animals with the most **negative** SHEARF5

Percentile bands for all Terminal Sires animals born in 2016

	LMY	IMF	SHEARF5
Top Value	6.8	0.7	-5.5
Top 1%	5.0	0.1	-1.6
Top 5%	4.4	-0.1	-0.4
Top 10%	4.1	-0.2	0.2
Top 20%	3.7	-0.3	1.0
Top 30%	3.4	-0.3	1.6
Top 40%	3.1	-0.4	2.1
Top 50%	2.8	-0.5	2.7
Top 60%	2.5	-0.5	3.5
Top 70%	2.2	-0.6	4.3
Top 80%	1.7	-0.7	5.2
Top 90%	1.0	-0.8	6.3
Bottom Value	-3.0	-1.5	12.8

Sheep Structural Assessment

The Yanco Sale rams have been independently structurally assessed by Murray Long of Clearview Consulting on 21st June 2017. The system uses the Researcher Version of Visual Sheep Scores developed by Australian Wool Innovation Limited (AWI) and Meat and Livestock Australia (MLA). All females have been and will continue to be structurally assessed to ensure the Yanco flock maintains a structurally sound breeding base. Any animals deemed inadequate will be culled.

How to use The Visual Sheep Scores

The Sheep Structural Assessment System uses a 1-5 scoring system for each conformational trait. A score of 3 is usually ideal, with 2 and 4 being slight-moderate deviation from the ideal conformation and 1 and 5 being extremes of the trait. Yanco does not catalogue animals with these extreme conformational issues.

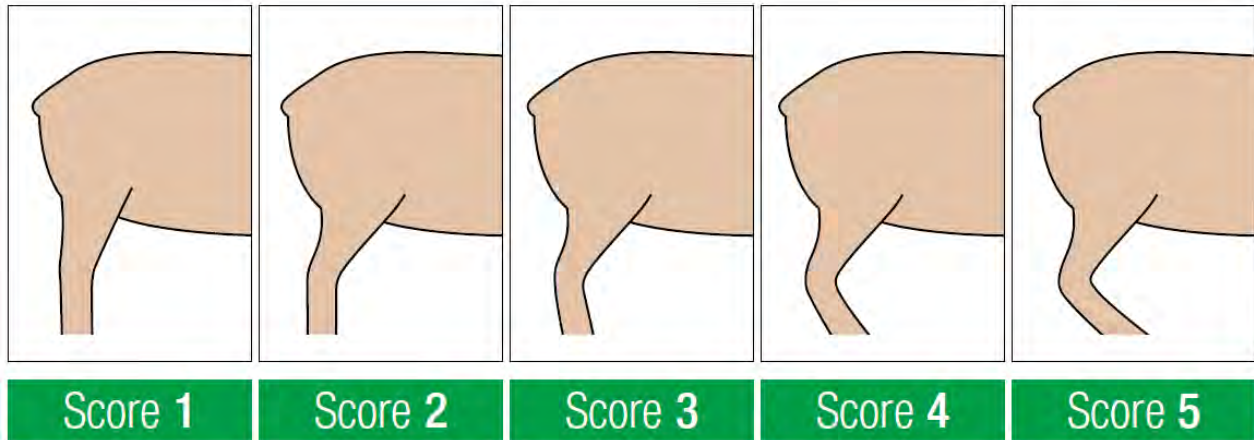
Hocks

Hocks refers to the soundness of leg structure, in particular the angulation of the hocks joint.

Score 1: Very little or no hock angulation, i.e. post-legged

Score 3: Moderate hock angulation (ideal)

Score 5: Extreme hock angulation, i.e. sickle-hocked



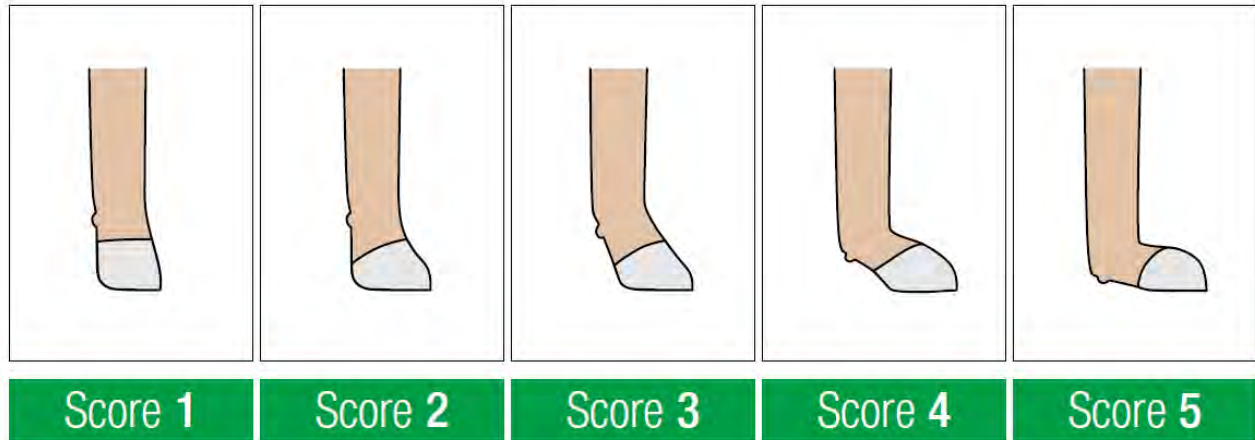
Pasterns

Pastern refers to the soundness of structure, in particular the angulation of the pastern joint.

Score 1: Very little of no angulation of the pastern, i.e. walking on the front of the toe

Score 3: Moderate angulation of the pastern

Score 5: Extreme angulation of the pastern, i.e. pasterns resting on the ground



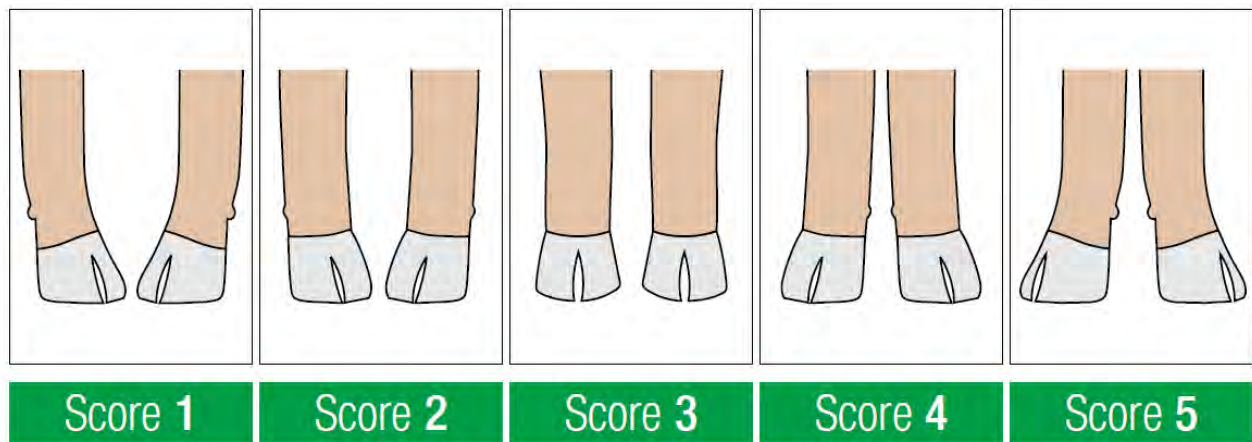
Front Legs

Front legs refers to the soundness of leg structure, in particular the orientation of the front legs and feet.

Score 1: Extreme inward orientation (pigeon-toed) of the pasterns and feet

Score 3: Pastern and feet have no orientation, i.e. point squarely forward

Score 5: Extreme outward orientation (splayed) of the pasterns and feet



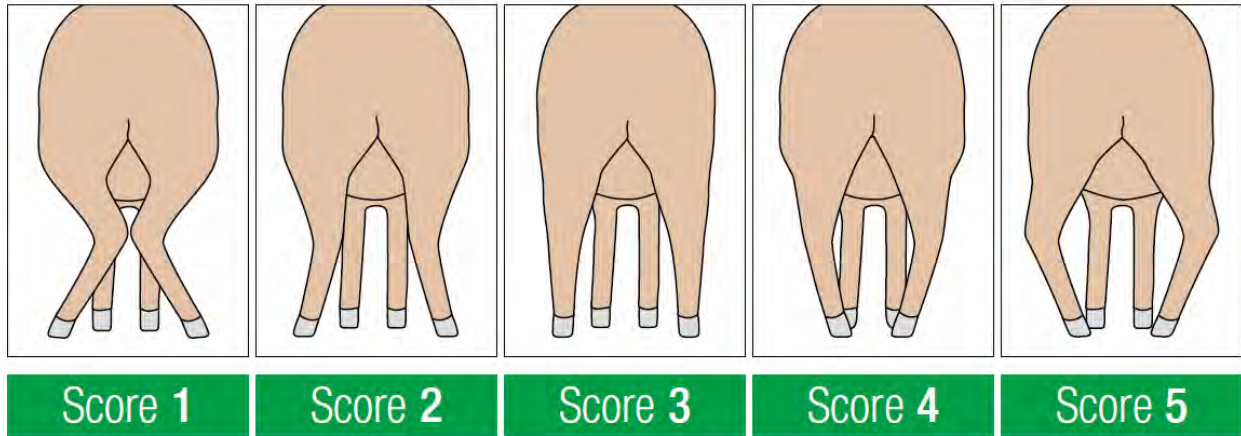
Back Legs

Back legs refers to the soundness of the hind leg structure, in particular the orientation of the back legs and angulation of the hock joints in relation to the feet.

Score 1: Upper hind legs close together and orientate inwards; hocks touching and feet splayed; extreme angulation of hocks

Score 3: Good width of stance; straight hind legs that stand squarely over feet.

Score 5: Hind legs that 'bow' outwards at the hocks, pasterns and feet 'pigeon toed', extreme angulation of hocks



Toes

Toes refers to the direction and the degree of the growth of the toes on all four feet.

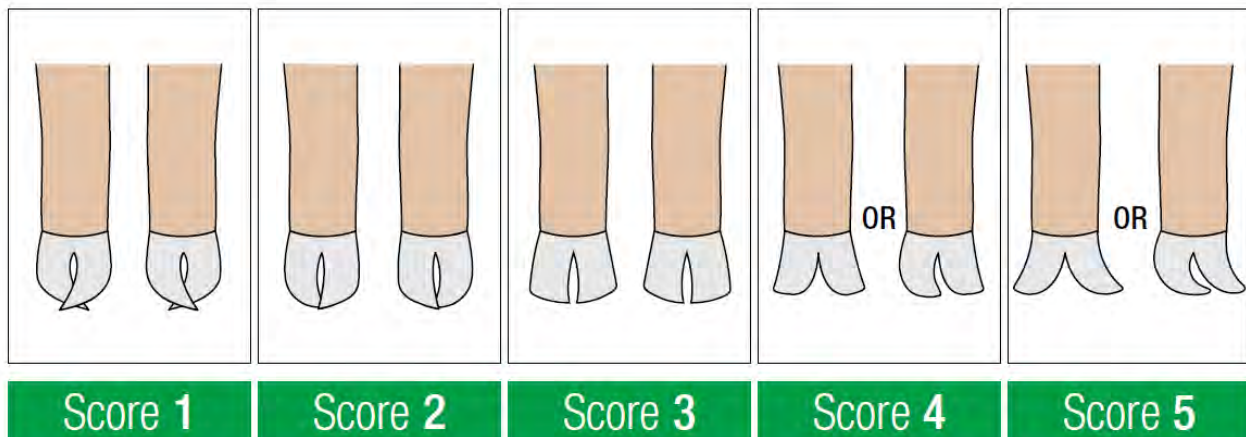
Score 1: Long or very long toes that curl severely inwards and crossover

Score 2: Long or very long toes that curl slightly inwards and touch.

Score 3: Toes growing straight and do not touch one another; are square and normal length.

Score 4: Long or very long toes that open slightly outwards or are slightly rolled over (either inward to outward).

Score 5: Long or very long toes that open severely outwards or are severely rolled over (either inward to outward).



Shoulders

Shoulder refers to the soundness of the shoulder blades and their positioning in relation to the neck and spine.

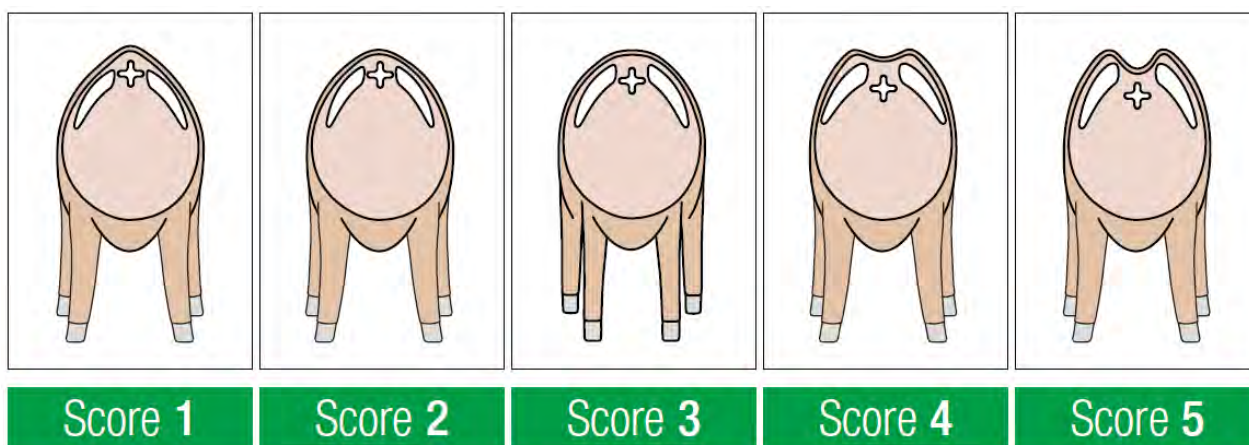
Score 1: Extremely low and narrow shoulder blades that create a sharp 'ridge' above the spine; back dips severely behind the shoulders.

Score 2: Shoulders positioned slightly below the spine to create a 'ridge'; back dips slightly behind the shoulders.

Score 3: Shoulder blades sit squarely either side of the spine i.e. no trough or ridge between the shoulders; back straight between shoulders and hips.

Score 4: Shoulders positioned slightly above the spine to create a 'trough' between the shoulder blades; back dips slightly behind the shoulders.

Score 5: Extremely high and wide shoulder blades that create a deep 'trough' above the spine; back dips severely behind the shoulders.



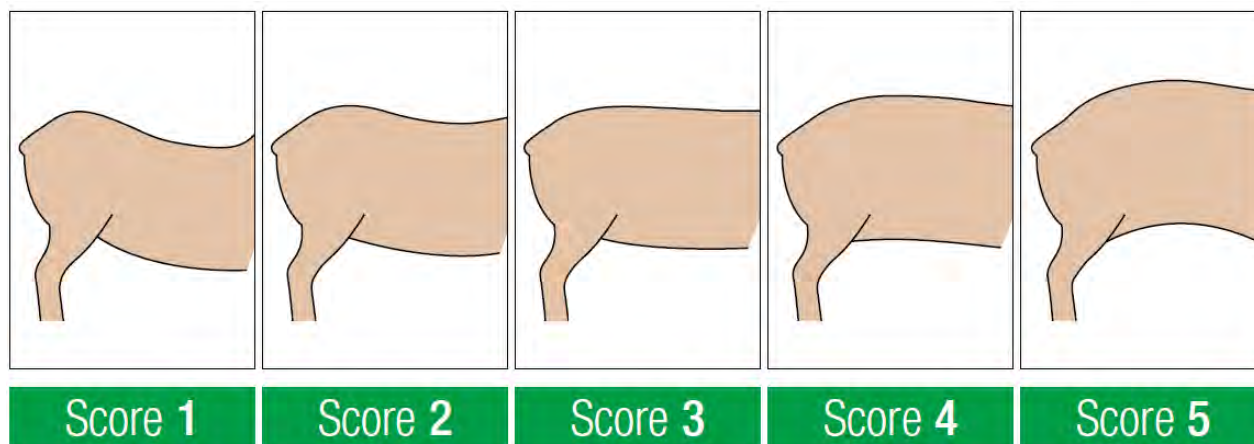
Back

Back refers to the soundness of the back structure, in particular the degree of 'dip' or 'arch' in the sheep's backline.

Score 1: Extremely 'dipped' backline; back is severely swayed downwards.

Score 3: Back straight between shoulders and hips.

Score 5: Extremely 'arched' backline; back is severely arched upwards.



Structural Assessment Visual Scores of Yanco Sale Rams

Lot	Tag Number	Hocks	Pastern	Front Legs	Back Legs	Toes	Shoulders	Back
1	160010	3	3	3	3	3	3	3
2	160027	3	3	3	3	3	4	2
3	160086	3	3	4	2	3	3	3
4	160047	3	3	3	3	3	3	3
5	160008	3	3	3	3	3	2	3
6	160074	3	3	3	3	2	3	3
7	160059	3	3	3	3	3	2	3
8	160003	3	3	3	3	3	3	3
9	160136	3	3	3	3	3	3	3
10	160110	3	3	3	3	3	3	3
11	160128	3	3	3	3	3	3	3
12	160135	2	3	3	2	3	2	3
13	160081	3	3	4	3	3	4	3
14	160033	3	3	3	3	3	3	3
15	160083	3	3	3	3	3	3	3
16	160095	3	3	3	3	3	3	3
17	160125	3	3	3	3	3	3	3
18	160097	3	3	3	3	3	3	3
19	160124	3	3	3	2	3	3	3
20	160121	3	3	3	3	3	3	3
21	160075	4	3	3	3	3	3	3
22	160116	4	3	3	3	3	2	3
23	160064	4	3	3	2	3	3	3
24	160146	3	3	3	2	4	3	3
25	160112	3	3	3	3	3	2	3
26	160029	3	3	4	3	3	3	2
27	160057	4	4	3	3	2	3	3
28	160025	2	3	4	2	3	3	3
29	160035	4	3	3	4	2	3	3
30	160115	3	4	3	3	4	3	3
31	160139	3	3	3	3	3	3	3
32	160078	3	3	3	2	2	3	3
33	160053	3	3	3	3	3	3	3
34	160043	4	4	4	3	2	4	3
35	160065	2	3	3	3	3	2	2
36	160118	3	3	3	3	2	4	3
37	160137	3	3	3	3	3	3	3

Reference Sires

BUNDARA DOWNS 122261 (AI & ET)

Lots: 4, 5, 6, 33

BWT (kg)	WWT (kg)	PWWT (kg)	PEMD (mm)	PFAT (mm)	PWEC (%)	Carcase Plus	Lamb 2020	EQ	LEQ	PROGENY :FLOCKS
0.22	13.0	19.9	2.8	-0.3	73	114.9	233	156.6	150.5	685:18
97%	96%	97%	9%	96%	83%	91%	97%	69%	69%	
LMY (%)	IMF (%)	Shear Force (%)	Sire:	Felix 100650						
4.30	-0.12	0.8	Dam:	Glengarry 122872						
84%	66%	65%								

Comments: Bundara Downs 122261 has outstanding growth (top 1%), muscle (top 10%), LMY (top 5%) and IMF (top 20%). His progeny are later maturing and long with excellent growth, suited to export lamb production. Unfortunately, since selection, Bundara Downs 122261 has decreased in worm resistance and sons should be avoided if internal parasites are of concern in your production system.

FARRER 140137 (AI)

Lots: 2, 7, 26

BWT (kg)	WWT (kg)	PWWT (kg)	PEMD (mm)	PFAT (mm)	PWEC (%)	Carcase Plus	Lamb 2020	EQ	LEQ	PROGENY :FLOCKS
0.27	10.7	15.6	3.0	-1.1	-50	219	118.0	153.0	157.4	147:9
91%	93%	93%	94%	93%	83%	93%	88%	67%	68%	
LMY (%)	IMF (%)	Shear Force (%)	Sire:	Farrer 110155						
4.24	-0.17	1.3	Dam:	Farrer 130218						
80%	65%	64%								

Comments: This excellent son of Farrer 110155 was selected in the SuperWhite Series 20 team. Farrer 140137 has low birth weight (lowest 25%), high growth (top 15%), muscle (top 1%) and high worm resistance (top 10%). Farrer 140137 progeny are smooth shouldered with muscle in the loin and hindquarters. His progeny are versatile and can suit both trade and export lambs.

PENDARRA 141655 (AI & Natural)

Lots: 18, 21, 25, 29, 32

BWT (kg)	WWT (kg)	PWWT (kg)	PEMD (mm)	PFAT (mm)	PWEC (%)	Carcase Plus	Lamb 2020	EQ	LEQ	PROGENY :FLOCKS
0.30	10.9	16.7	1.6	0.1	4	202	113.5	139.2	139.0	96:4
86%	89%	89%	90%	89%	53%	88%	75%	61%	60%	
LMY (%)	IMF (%)	Shear Force (%)	Sire:	Pendarra 120786						
2.56	-0.15	1.9	Dam:	Pendarra 119306						
75%	60%	59%								

Comments: We were lucky enough to have use of Pendarra 141655 in both the AI program, as a SuperWhites allocation, and in natural mating. Pendarra 141655 is in the top 20% for all indexes, has high growth (top 5%) and intramuscular fat (top 20%). Sons of Pendarra 141655 are easy-care rams with great volume of carcass, smooth through the shoulder and suited to trade lamb production.

FARRER 140019 (AI & ET)**Lots: 1, 3, 8, 27**

BWT (kg)	WWT (kg)	PWWT (kg)	PEMD (mm)	PFAT (mm)	PWEC (%)	Carcase Plus	Lamb 2020	EQ	LEQ	PROGENY :FLOCKS
-0.19	12.8	20.0	-0.6	2.4	-56	230	119.8	146.4	151.4	589:15
96%	97%	96%	96%	96%	82%	96%	90%	70%	70%	
LMY (%)	IMF (%)	Shear Force (%)	Sire:	Pollambi 110451 (APP)						
3.95	-0.37	4.2	Dam:	Farrer 120237						
84%	67%	67%								

Comments: Farrer 140019 has been extensively used in the industry, with low birth weight (lowest 10%), brilliant growth (top 1%), muscle (top 5%) and worm resistance (top 1%). He was selected for use both in the AI and the Embryo Transfer program, where he was mated to our top ewe for Meat Eating Quality at the time. One of his sons, Yanco 160003, was selected for the SuperWhites Series 22 program. His progeny were standouts at lamb marking in 2016 and have continued to excel with added stretch and depth of body. Farrer 140019 sons will produce progeny that are highly versatile and can suit both trade and export lambs.

LANGLEY HEIGHTS 060073 (AI)**Lots: 13, 15, 23, 28, 34**

BWT (kg)	WWT (kg)	PWWT (kg)	PEMD (mm)	PFAT (mm)	PWEC (%)	Carcase Plus	Lamb 2020	EQ	LEQ	PROGENY :FLOCKS
0.07	6.5	12.3	3.6	0.6	-72	196	115.9	136.9	142.8	1154:29
98%	98%	98%	98%	98%	92%	98%	95%	95%	94%	
LMY (%)	IMF (%)	Shear Force (%)	Sire:	Farrer 040074						
1.27	-0.31	-0.2	Dam:	Langley Heights 030666						
97%	95%	93%								

Comments: A highly used and well known industry sire, used to benchmark Yanco with other flocks across Australia. Langley Heights 060073 was used over high growth ewe lambs due to his heavy muscling (top 1%) Langley Heights 060073 is also in the top 1% for worm resistance, top5% for shear force and top 20% for intramuscular fat. Sons are suited to trade lamb production due to their maturity patterns, but are not recommended to go over maidens due to heavier shoulders.

GEMINI 090298 (AI)**Lots: 14**

BWT (kg)	WWT (kg)	PWWT (kg)	PEMD (mm)	PFAT (mm)	PWEC (%)	Carcase Plus	Lamb 2020	EQ	LEQ	PROGENY :FLOCKS
0.38	10.1	15.9	1.4	-0.9	16	198	112.5	138.9	137.8	
91%	97%	97%	97%	97%	81%	97%	90%	93%	92%	
LMY (%)	IMF (%)	Shear Force (%)	Sire:	Gemini 060158						
2.88	-0.51	-0.9	Dam:	Gemini 060127						
95%	93%	91%								

Comments: At the time of selection, Gemini 090298 had excellent meat eating quality figures coupled with outstanding conformation and carcass type, being a Champion show-winning sire. Unfortunately, his IMF figures went in the opposite direction intended when the single step analysis was introduced. However, his son is an excellent type animal suited to trade lamb production.

YANCO 150006 (Natural)**Lots: 10, 12, 36**

BWT (kg)	WWT (kg)	PWWT (kg)	PEMD (mm)	PFAT (mm)	PWEC (%)	Carcase Plus	Lamb 2020	EQ	LEQ	PROGENY :FLOCKS
-0.08	10.3	14.8	2.0	-1.1	-7	203	114.3	136.3	137.1	24:1
76%	77%	78%	79%	77%	62%	76%	70%	52%	52%	
LMY (%)	IMF (%)	Shear Force (%)	Sire:	Ashmore 130305						
4.28	-0.57	3.3	Dam:	Yanco 130128						
67%	52%	51%								

Comments: This young ram was the progeny of a SuperWhites sire, Ashmore 130305 and sold for the top price in the 2016 sale. He has terrific length and smoothness through the shoulder, which have carried through to his sons. They suit the production of export lambs.

YANCO 150074 APP (Natural)**Lot: 17, 30, 31**

BWT (kg)	WWT (kg)	PWWT (kg)	PEMD (mm)	PFAT (mm)	PWEC (%)	Carcase Plus	Lamb 2020	EQ	LEQ	PROGENY :FLOCKS
0.05	7.2	11.2	2.2	-0.5	-1	183	111.2	146.0	146.1	14:1
72%	75%	75%	76%	74%	62%	73%	69%	59%	58%	
LMY (%)	IMF (%)	Shear Force (%)	Sire:	Pollambi 080608						
2.95	0.33	-1.6	Dam:	Yanco 120121						
67%	61%	60%								

Comments: A total outcross for Yanco by a Poll Dorset sire who at the time of selection was the only trait leader in Australia for Meat Eating Quality and Lean Meat Yield. This ram has been retained, mainly for the fact that he has an outstanding carcass and phenomenal figures for meat eating quality (top 1%). Sons of Yanco 150074 are stocky rams that have excellent carcasses and are suited to production of trade lambs.

YANCO 150043 (Natural)**Lots: 9, 16, 19, 37**

BWT (kg)	WWT (kg)	PWWT (kg)	PEMD (mm)	PFAT (mm)	PWEC (%)	Carcase Plus	Lamb 2020	EQ	LEQ	PROGENY :FLOCKS
0.19	8.8	14.2	1.8	-0.3	1	192	112.4	137.0	137.1	9:1
71%	75%	76%	77%	75%	64%	74%	70%	51%	52%	
LMY (%)	IMF (%)	Shear Force (%)	Sire:	Felix 130742						
2.25	-0.07	-0.4	Dam:	Glengarry 133210						
66%	50%	52%								

Comments: This young ram was by a SuperWhites sire, Felix 130742, who has gone from strength to strength, particularly in meat eating quality ASBVs (top 5% for intramuscular fat and shear force). His sons are suited to production of trade lambs.

PENDARRA 141698 (Natural)**Lots: 11, 20, 22, 24**

BWT (kg)	WWT (kg)	PWWT (kg)	PEMD (mm)	PFAT (mm)	PWEC (%)	Carcase Plus	Lamb 2020	EQ	LEQ	PROGENY :FLOCKS
0.36	9.7	16.3	2.2	-0.6	-25	208	115.5	147.0	149.3	50:2
80%	86%	87%	88%	86%	48%	86%	72%	58%	56%	
LMY (%)	IMF (%)	Shear Force (%)	Sire:	Ashmore 100367						
3.70	-0.32	0.9	Dam:	Pendarra 108026						
73%	55%	55%								

Comments: Another excellent carcass sire that has excellent figures for growth and is in the top 10% for all of the indexes. Sons are versatile and suited to both trade and export lamb production.

LOT 1: YANCO 160010 (EMBRYO TRANSFER)



- This young sire has been a standout since birth
- Selected as a backup ram for Yanco's artificial insemination program by the students
- Yanco 160010 is an outstanding ram, the complete package of conformation, carcass volume and performance.
- Top 5% for growth, lowest 20% for birthweight and top 10% for intramuscular fat, whilst still being moderate on fat to allow for finishing lambs.

Lot	ID	BWT (kg)	WWT (kg)	PWWT (kg)	PEMD (mm)	PFAT (mm)	PWEC (%)	Carcase Plus	Lamb 2020	EQ	LEQ
1	160010	0.12	11.0	16.6	1.5	-0.6	-18	204	114.7	138.2	140.0
Accuracy (%)		65%	67%	66%	68%	67%	54%	64%	60	49%	49%
		LMY (%)	IMF (%)	Shear Force (kg)	Sire:	Farrer 140019			DOB:	12/07/2016	
		3.16	-0.13	3.9	Dam:	Yanco 120086					
Accuracy (%)		58%	52%	51%							

Purchaser:

Price:

LOT 2: YANCO 160027



- Used as a backup sire in the artificial insemination program
- This young sire has been identified by students since weaning and was selected as part of the show team.
- Solid and well-muscled ram with excellent growth (highest 10%)
- Top 10% for worm resistance and top 20% for muscling.

Lot	ID	BWT (kg)	WWT (kg)	PWWT (kg)	PEMD (mm)	PFAT (mm)	PWEC (%)	Carcase Plus	Lamb 2020	EQ	LEQ
2	160027	0.38	10.4	15.7	2.4	-0.8	-32	209	116.0	143.5	146.4
Accuracy (%)		63%	67%	67%	70%	68%	53%	65%	60%	45%	45%
		LMY (%)	IMF (%)	Shear Force (kg)	Sire:	Farrer 140137			DOB:	17/7/2016	
		3.73	-0.42	1.7	Dam:	Glengarry 122872					
Accuracy (%)		58%	47%	46%							

Purchaser:

Price:

LOT 3: YANCO 160086



- Used to back up Yanco's annual AI program
- Out of a ewe lamb by an outstanding Farrer sire
- Rare combination of low birthweight (lowest 10%) and high growth (highest 10%)
- Outstanding carcass volume, stretch and depth.
- Suited to go over maiden ewes and fine wool Merinos due to low birthweight
- Suit production of trade lambs

Lot	ID	BWT (kg)	WWT (kg)	PWWT (kg)	PEMD (mm)	PFAT (mm)	PWEC (%)	Carcase Plus	Lamb 2020	EQ	LEQ
3	160086	-0.04	11.2	17.1	1.6	-0.8	1	208	114.5	139.7	139.9
Accuracy (%)		64%	67%	67%	70%	68%	55%	65%	61%	48%	48%
		LMY (%)	IMF (%)	Shear Force (%)	Sire:	Farrer 140019			DOB:	23/7/2016	
		3.12	-0.24	2.4	Dam:	Yanco 150090					
Accuracy (%)		59%	50%	50%							

Purchaser:

Price:

LOT 4: YANCO 160047



- Used to backup Yanco's annual AI program
- Was a standout as a ram lamb and used as part of Yanco's show team.
- Good muscling (highest 20%) and excellent meat eating quality potential (highest 20%) for intramuscular fat and lowest 10% for shear force)
- Not suited to production systems where parasite burden is a concern

Lot	ID	BWT (kg)	WWT (kg)	PWWT (kg)	PEMD (mm)	PFAT (mm)	PWEC (%)	Carcase Plus	Lamb 2020	EQ	LEQ
4	160047	0.24	9.2	14.1	2.3	-0.4	36	198	111.8	140.7	137.7
Accuracy (%)		65%	68%	69%	71%	69%	55%	67%	62%	45%	46%
		LMY (%)	IMF (%)	Shear Force (%)	Sire:	Bundara Downs 122261			DOB:	20/07/2016	
		3.35	-0.16	0.2	Dam:	Glengarry 133210					
Accuracy (%)		59%	46%	45%							

Purchaser:

Price:

LOT 5: YANCO 160008 (EMBRYO TRANSFER)



- An embryo transfer ram who has been a stand out since birth
- Outstanding growth (highest 1%) and exceptional conformation and carcass depth and volume.
- Was to be used as a sire originally, however his fat and IMF figures went in the wrong direction for our breeding program
- Suited to the production of export lambs due to his low fat and exceptional carcass length
- Not suited to production systems where parasite burden is a concern

Lot	ID	BWT (kg)	WWT (kg)	PWWT (kg)	PEMD (mm)	PFAT (mm)	PWEC (%)	Carcase Plus	Lamb 2020	EQ	LEQ
5	160008	0.16	12.6	18.9	2.0	-1.0	15	223	116.0	144.2	143.1
Accuracy (%)		63%	65%	65%	67%	65%	52%	63%	58%	47%	47%
		LMY (%)	IMF (%)	Shear Force (%)	Sire:	Bundara Downs 122261			DOB:	12/07/2016	
		4.83	-0.53	3.5	Dam:	Glengarry 144743					
Accuracy (%)		56%	49%	48%							

Purchaser:

Price:

LOT 6: YANCO 160074



- Yanco 160074 was the agent's pick at cataloguing due to his sheer size and presence
- Well-balanced ram with excellent scale and carcass
- Good early growth (highest 20%) and a balance of fat and muscle
- Good intramuscular fat (highest 20%)
- Not suited to production systems where parasite burden is a concern
- Suited to production of export lambs

Lot	ID	BWT (kg)	WWT (kg)	PWWT (kg)	PEMD (mm)	PFAT (mm)	PWEC (%)	Carcase Plus	Lamb 2020	EQ	LEQ
6	160074	0.30	9.8	14.6	1.7	-0.2	48	194	110.7	134.9	130.9
Accuracy (%)		64%	68%	68%	70%	68%	52%	66%	60%	47%	47%
		LMY (%)	IMF (%)	Shear Force (%)	Sire:	Bundara Downs 122261			DOB:	20/07/2016	
		2.61	-0.16	1.4	Dam:	Gaerloch 110120					
Accuracy (%)		58%	49%	48%							

Purchaser:

Price:

LOT 7: YANCO 160059



- Well-muscled ram with desirable shape and depth
- Exceptional meat eating quality with highest 5% intramuscular fat and lowest 10% shear force.
- Yanco 160059 is suited to the production of trade lambs

Lot	ID	BWT (kg)	WWT (kg)	PWWT (kg)	PEMD (mm)	PFAT (mm)	PWEC (%)	Carcase Plus	Lamb 2020	EQ	LEQ
7	160059	0.24	9.1	13.6	2.2	-0.5	-35	196	114.3	144.8	147.9
Accuracy (%)		64%	66%	66%	69%	67%	55%	64%	60%	48%	49%
		LMY (%)	IMF (%)	Shear Force (%)	Sire:	Farrer 140137			DOB:	20/07/2016	
		2.63	0.05	0.0	Dam:	Yanco 140002					
Accuracy (%)		57%	51%	50%							

Purchaser:

Price:

LOT 8: YANCO 160003



- Selected in Series 22 of the SuperWhites Program
- Born and raised as the smallest triplet by our Embryo Transfer donor ewe, Yanco 120121 with two cracking sisters
- Full brother by Embryo Transfer to Lot 1, the outstanding Yanco 160010
- Don't let his smaller stature fool you, this young ram has genetic potential plus!
- Low birthweight (lowest 20%), high growth (top 20% for WWT and 10% for PWWT) and outstanding meat eating quality (highest 1% for IMF and lowest 5% for shear force)

Lot	ID	BWT (kg)	WWT (kg)	PWWT (kg)	PEMD (mm)	PFAT (mm)	PWEC (%)	Carcase Plus	Lamb 2020	EQ	LEQ
8	160003	0.10	10.1	16.4	2.1	0.1	-23	205	115.1	145.1	147.3
Accuracy (%)		65%	67%	66%	68%	67%	54%	64%	60%	49%	49%
		LMY (%)	IMF (%)	Shear Force (%)	Sire:	Farrer 140019			DOB:	8/7/2016	
		2.24	0.07	0.9	Dam:	Yanco 120086					
Accuracy (%)		55%	52%	51%							

Purchaser:

Price:

LOT 9: YANCO 160136

Lot	ID	BWT (kg)	WWT (kg)	PWWT (kg)	PEMD (mm)	PFAT (mm)	PWEC (%)	Carcase Plus	Lamb 2020	EQ	LEQ
9	160136	0.16	8.1	13.0	1.6	-0.3	17	184	110.7	137.1	135.8
Accuracy (%)		57%	62%	62%	66%	63%	43%	61%	54%	41%	41%
		LMY (%)	IMF (%)	Shear Force (%)	Sire:	Yanco 150043			DOB:	22/08/2016	
		1.82	0.05	-0.5	Dam:	Yanco 120058					
Accuracy (%)		54%	42%	42%							

Purchaser:**Price:****LOT 10: YANCO 160110**

Lot	ID	BWT (kg)	WWT (kg)	PWWT (kg)	PEMD (mm)	PFAT (mm)	PWEC (%)	Carcase Plus	Lamb 2020	EQ	LEQ
10	160110	0.21	9.6	14.3	1.2	-0.5	-14	188	112.4	133.9	135.3
Accuracy (%)		58%	62%	62%	66%	63%	44%	60%	54%	37%	37%
		LMY (%)	IMF (%)	Shear Force (%)	Sire:	Yanco 150006			DOB:	06/08/2016	
		2.90	-0.22	2.4	Dam:	Yanco 120065					
Accuracy (%)		53%	37%	37%							

Purchaser:**Price:****LOT 11: YANCO 160128**

Lot	ID	BWT (kg)	WWT (kg)	PWWT (kg)	PEMD (mm)	PFAT (mm)	PWEC (%)	Carcase Plus	Lamb 2020	EQ	LEQ
11	160128	0.20	9.8	16.4	2.0	-0.4	-39	205	115.7	140.4	143.9
Accuracy (%)		59%	65%	65%	68%	66%	43%	63%	55%	40%	40%
		LMY (%)	IMF (%)	Shear Force (%)	Sire:	Pendarra 141698			DOB:	18/08/2016	
		3.30	-0.4	1.7	Dam:	Yanco 150011					
Accuracy (%)		55%	40%	40%							

Purchaser:**Price:****LOT 12: YANCO 160135**

Lot	ID	BWT (kg)	WWT (kg)	PWWT (kg)	PEMD (mm)	PFAT (mm)	PWEC (%)	Carcase Plus	Lamb 2020	EQ	LEQ
12	160135	0.06	8.9	13.3	1.5	-0.5	12	187	111.2	134.3	133.4
Accuracy (%)		59%	63%	63%	66%	53%	45%	61%	55%	38%	38%
		LMY (%)	IMF (%)	Shear Force (%)	Sire:	Yanco 150006			DOB:	21/08/2016	
		2.66	-0.22	1.1	Dam:	Yanco 120082					
Accuracy (%)		53%	38%	38%							

Purchaser:**Price:**

LOT 13: YANCO 160081

Lot	ID	BWT (kg)	WWT (kg)	PWWT (kg)	PEMD (mm)	PFAT (mm)	PWEC (%)	Carcase Plus	Lamb 2020	EQ	LEQ
13	160081	0.16	7.1	12.3	2.5	0.1	-49	188	113.8	138.2	142.4
Accuracy (%)		63%	63%	62%	62%	62%	53%	60%	57%	54%	53%
		LMY (%)	IMF (%)	Shear Force (%)	Sire:	Langley Heights 060073			DOB:	22/07/2016	
		1.56	-0.20	-1.0	Dam:	Yanco 140097					
Accuracy (%)		60%	58%	58%							

Purchaser:**Price:****LOT 14: YANCO 160033**

Lot	ID	BWT (kg)	WWT (kg)	PWWT (kg)	PEMD (mm)	PFAT (mm)	PWEC (%)	Carcase Plus	Lamb 2020	EQ	LEQ
14	160033	0.16	8.5	13.1	2.2	-0.7	-2	194	112.8	142.6	142.9
Accuracy (%)		65%	67%	68%	70%	69%	55%	66%	62%	55%	54%
		LMY (%)	IMF (%)	Shear Force (%)	Sire:	Gemini 090298			DOB:	18/07/2016	
		3.08	-0.19	-1.2	Dam:	Yanco 150026					
Accuracy (%)		62%	58%	57%							

Purchaser:**Price:****LOT 15: YANCO 160083**

Lot	ID	BWT (kg)	WWT (kg)	PWWT (kg)	PEMD (mm)	PFAT (mm)	PWEC (%)	Carcase Plus	Lamb 2020	EQ	LEQ
15	160083	0.45	8.3	13.7	1.7	-0.5	-38	189	113.4	131.6	134.9
Accuracy (%)		66%	69%	69%	71%	70%	57%	68%	63%	54%	54%
		LMY (%)	IMF (%)	Shear Force (%)	Sire:	Langley Heights 060073			DOB:	23/07/2016	
		2.49	-0.45	1.6	Dam:	Glengarry 122918					
Accuracy (%)		63%	57%	56%							

Purchaser:**Price:****LOT 16: YANCO 160095**

Lot	ID	BWT (kg)	WWT (kg)	PWWT (kg)	PEMD (mm)	PFAT (mm)	PWEC (%)	Carcase Plus	Lamb 2020	EQ	LEQ
16	160095	0.32	8.9	13.6	1.1	-0.3	-11	183	111.6	131.7	132.9
Accuracy (%)		56%	61%	61%	65%	62%	47%	59%	55%	36%	37%
		LMY (%)	IMF (%)	Shear Force (%)	Sire:	Yanco 150043			DOB:	5/08/2016	
		1.90	-0.12	0.6	Dam:	Yanco 140092					
Accuracy (%)		52%	36%	37%							

Purchaser:**Price:**

LOT 17: YANCO 160125

Lot	ID	BWT (kg)	WWT (kg)	PWWT (kg)	PEMD (mm)	PFAT (mm)	PWEC (%)	Carcase Plus	Lamb 2020	EQ	LEQ
17	160125	0.24	8.1	11.9	1.4	-0.5	-7	179	110.9	135.0	135.7
Accuracy (%)		56%	61%	61%	65%	62%	40%	59%	52%	41%	41%
		LMY (%)	IMF (%)	Shear Force (%)	Sire:	Yanco 150074			DOB:	18/08/2017	
		2.44	-0.03	0.5	Dam:	Yanco 140037					
Accuracy (%)		52%	43%	42%							

Purchaser:**Price:****LOT 18: YANCO 160097**

Lot	ID	BWT (kg)	WWT (kg)	PWWT (kg)	PEMD (mm)	PFAT (mm)	PWEC (%)	Carcase Plus	Lamb 2020	EQ	LEQ
18	160097	0.26	9.6	16.2	1.4	0.5	2	193	112.4	132.7	132.6
Accuracy (%)		62%	66%	66%	69%	67%	41%	64%	55%	46%	45%
		LMY (%)	IMF (%)	Shear Force (%)	Sire:	Pendarra 141655			DOB:	05/08/2016	
		1.65	-0.04	2.3	Dam:	Yanco 150029					
Accuracy (%)		56%	47%	47%							

Purchaser:**Price:****LOT 19: YANCO 160124**

Lot	ID	BWT (kg)	WWT (kg)	PWWT (kg)	PEMD (mm)	PFAT (mm)	PWEC (%)	Carcase Plus	Lamb 2020	EQ	LEQ
19	160124	0.08	7.8	12.5	1.6	-0.4	51	182	109.0	144.1	140.0
Accuracy (%)		57%	61%	61%	65%	62%	46%	59%	54%	44%	44%
		LMY (%)	IMF (%)	Shear Force (%)	Sire:	Yanco 150043			DOB:	14/08/2016	
		1.93	0.31	-2.5	Dam:	Yanco 120127					
Accuracy (%)		52%	47%	46%							

Purchaser:**Price:****LOT 20: YANCO 160121**

Lot	ID	BWT (kg)	WWT (kg)	PWWT (kg)	PEMD (mm)	PFAT (mm)	PWEC (%)	Carcase Plus	Lamb 2020	EQ	LEQ
20	160121	0.35	8.5	14.3	1.3	-0.1	3	185	111.3	135.5	135.4
Accuracy (%)		60%	65%	65%	68%	68%	41%	63%	55%	39%	39%
		LMY (%)	IMF (%)	Shear Force (%)	Sire:	Pendarra 141698			DOB:	10/08/2016	
		2.28	-0.06	1.2	Dam:	Yanco 120049					
Accuracy (%)		50%	39%	39%							

Purchaser:**Price:**

LOT 21: YANCO 160075

Lot	ID	BWT (kg)	WWT (kg)	PWWT (kg)	PEMD (mm)	PFAT (mm)	PWEC (%)	Carcase Plus	Lamb 2020	EQ	LEQ
21	160075	0.32	10.0	15.9	1.5	0.1	18	196	112.1	134.9	133.5
Accuracy (%)		61%	65%	66%	69%	66%	44%	64%	56%	43%	43%
		LMY (%)	IMF (%)	Shear Force (%)	Sire:	Pendarra 141655			DOB:	22/07/2016	
		2.62	-0.25	2.4	Dam:	Yanco 140075					
Accuracy (%)		55%	43%	43%							

Purchaser:**Price:****LOT 22: YANCO 160116**

Lot	ID	BWT (kg)	WWT (kg)	PWWT (kg)	PEMD (mm)	PFAT (mm)	PWEC (%)	Carcase Plus	Lamb 2020	EQ	LEQ
22	160116	0.23	8.3	14.0	2.1	-0.9	-28	196	114.1	141.1	143.7
Accuracy (%)		60%	65%	66%	69%	67%	42%	64%	56%	42%	41%
		LMY (%)	IMF (%)	Shear Force (%)	Sire:	Pendarra 141698			DOB:	07/08/2016	
		3.57	-0.32	0.1	Dam:	Glengarry 133337					
Accuracy (%)		56%	42%	41%							

Purchaser:**Price:****LOT 23: YANCO 160064**

Lot	ID	BWT (kg)	WWT (kg)	PWWT (kg)	PEMD (mm)	PFAT (mm)	PWEC (%)	Carcase Plus	Lamb 2020	EQ	LEQ
23	160064	0.07	8.0	13.5	2.7	-0.5	-60	198	115.7	137.3	142.3
Accuracy (%)		65%	67%	68%	70%	68%	59%	67%	63%	55%	55%
		LMY (%)	IMF (%)	Shear Force (%)	Sire:	Langley Heights 060073			DOB:	21/07/2016	
		2.98	-0.46	1.6	Dam:	Yanco 150035					
Accuracy (%)		62%	58%	57%							

Purchaser:**Price:****LOT 24: YANCO 160146**

Lot	ID	BWT (kg)	WWT (kg)	PWWT (kg)	PEMD (mm)	PFAT (mm)	PWEC (%)	Carcase Plus	Lamb 2020	EQ	LEQ
24	160146	0.23	8.7	15.1	2.1	-0.4	-11	198	113.7	143.8	145.0
Accuracy (%)		60%	65%	65%	68%	66%	46%	63%	57%	42%	42%
		LMY (%)	IMF (%)	Shear Force (%)	Sire:	Pendarra 141698			DOB:		
		2.73	-0.20	-0.8	Dam:	Yanco 150093					
Accuracy (%)		56%	43%	43%							

Purchaser:**Price:**

LOT 24: YANCO 160112

Lot	ID	BWT (kg)	WWT (kg)	PWWT (kg)	PEMD (mm)	PFAT (mm)	PWEC (%)	Carcase Plus	Lamb 2020	EQ	LEQ
25	160112	0.26	9.2	13.3	1.4	-0.1	-12	184	111.8	127.9	129.0
Accuracy (%)		62%	66%	66%	70%	67%	45%	65%	57%	41%	42%
		LMY (%)	IMF (%)	Shear Force (%)	Sire:	Pendarra 141655			DOB:	7/08/2016	
		2.27	-0.27	2.4	Dam:	Glengarry 133064					
Accuracy (%)		56%	42%	41%							

Purchaser:**Price:****LOT 26: YANCO 160025**

Lot	ID	BWT (kg)	WWT (kg)	PWWT (kg)	PEMD (mm)	PFAT (mm)	PWEC (%)	Carcase Plus	Lamb 2020	EQ	LEQ
26	160025	0.21	8.9	13.5	2.8	-0.2	-41	200	115.2	141.3	144.8
Accuracy (%)		63%	67%	67%	70%	68%	53%	65%	60%	46%	46%
		LMY (%)	IMF (%)	Shear Force (%)	Sire:	Farrer 140137			DOB:	17/07/2016	
		2.69	-0.18	0.9	Dam:	Glengarry 122872					
Accuracy (%)		58%	48%	47%							

Purchaser:**Price:****LOT 27: YANCO 160029**

Lot	ID	BWT (kg)	WWT (kg)	PWWT (kg)	PEMD (mm)	PFAT (mm)	PWEC (%)	Carcase Plus	Lamb 2020	EQ	LEQ
27	160029	-0.12	8.8	15.4	2.1	-0.3	-29	200	114.7	139.1	141.9
Accuracy (%)		65%	68%	68%	70%	69%	54%	66%	61%	44%	45%
		LMY (%)	IMF (%)	Shear Force (%)	Sire:	Farrer 140019			DOB:	18/07/2016	
		2.62	-0.26	0.7	Dam:	Glengarry 133218					
Accuracy (%)		58%	45%	45%							

Purchaser:**Price:****LOT 28: YANCO 160057**

Lot	ID	BWT (kg)	WWT (kg)	PWWT (kg)	PEMD (mm)	PFAT (mm)	PWEC (%)	Carcase Plus	Lamb 2020	EQ	LEQ
28	160057	0.15	8.2	14.1	1.9	-0.3	-50	192	114.4	133.4	137.7
Accuracy (%)		65%	68%	68%	71%	69%	56%	67%	63%	53%	53%
		LMY (%)	IMF (%)	Shear Force (%)	Sire:	Langley Heights 060073			DOB:	20/07/2016	
		2.32	-0.36	1.4	Dam:	Yanco 150031					
Accuracy (%)		62%	56%	56%							

Purchaser:**Price:**

LOT 29: YANCO 160035

Lot	ID	BWT (kg)	WWT (kg)	PWWT (kg)	PEMD (mm)	PFAT (mm)	PWEC (%)	Carcase Plus	Lamb 2020	EQ	LEQ
29	160035	0.13	7.9	12.9	1.8	0.3	22	183	110.3	138.3	136.5
Accuracy (%)		63%	67%	67%	70%	68%	48%	65%	58%	45%	45%
		LMY (%)	IMF (%)	Shear Force (%)	Sire:	Pendarra 141655			DOB:	18/07/2016	
		1.57	0.17	-0.6	Dam:	Yanco 120157					
Accuracy (%)		57%	46%	46%							

Purchaser:**Price:****LOT 30: YANCO 160115**

Lot	ID	BWT (kg)	WWT (kg)	PWWT (kg)	PEMD (mm)	PFAT (mm)	PWEC (%)	Carcase Plus	Lamb 2020	EQ	LEQ
30	160115	0.31	9.3	14.4	1.5	-1.1	12	194	112.1	142.1	141.3
Accuracy (%)		58%	63%	63%	66%	64%	48%	61%	56%	45%	45%
		LMY (%)	IMF (%)	Shear Force (%)	Sire:	Yanco 150074			DOB:	7/08/2016	
		3.82	-0.14	1.1	Dam:	Yanco 120022					
Accuracy (%)		54%	48%	47%							

Purchaser:**Price:****LOT 31: YANCO 160139**

Lot	ID	BWT (kg)	WWT (kg)	PWWT (kg)	PEMD (mm)	PFAT (mm)	PWEC (%)	Carcase Plus	Lamb 2020	EQ	LEQ
31	160139	0.17	7.8	12.1	1.6	-0.5	3	181	110.8	134.0	133.9
Accuracy (%)		57%	61%	62%	65%	63%	48%	60%	55%	39%	40%
		LMY (%)	IMF (%)	Shear Force (%)	Sire:	Yanco 150074			DOB:	23/08/2016	
		1.88	-0.10	-0.6	Dam:	Yanco 110005					
Accuracy (%)		53%	40%	40%							

Purchaser:**Price:****LOT 32: YANCO 160078**

Lot	ID	BWT (kg)	WWT (kg)	PWWT (kg)	PEMD (mm)	PFAT (mm)	PWEC (%)	Carcase Plus	Lamb 2020	EQ	LEQ
32	160078	0.23	9.1	14.3	1.5	0.0	-8	189	112.3	136.1	136.9
Accuracy (%)		61%	66%	66%	69%	66%	36%	64%	54%	41%	41%
		LMY (%)	IMF (%)	Shear Force (%)	Sire:	Pendarra 141655			DOB:	21/07/2016	
		2.13	-0.15	0.6	Dam:	Yanco 140051					
Accuracy (%)		55%	41%	41%							

Purchaser:**Price:**

LOT 33: YANCO 160053

Lot	ID	BWT (kg)	WWT (kg)	PWWT (kg)	PEMD (mm)	PFAT (mm)	PWEC (%)	Carcase Plus	Lamb 2020	EQ	LEQ
33	160053	0.09	10.6	16.8	2.4	-0.8	20	215	114.7	142.6	141.0
Accuracy (%)		65%	68%	69%	71%	69%	55%	67%	62%	49%	49%
		LMY (%)	IMF (%)	Shear Force (%)	Sire:	Bundara Downs 122261			DOB:	20/07/2016	
		4.34	-0.55	2.3	Dam:	Glengarry 133391					
Accuracy (%)		59%	51%	50%							

Purchaser:**Price:****LOT 34: YANCO 160043**

Lot	ID	BWT (kg)	WWT (kg)	PWWT (kg)	PEMD (mm)	PFAT (mm)	PWEC (%)	Carcase Plus	Lamb 2020	EQ	LEQ
34	160043	0.08	6.8	11.8	2.4	0.3	-51	184	113.3	132.2	136.5
Accuracy (%)		64%	67%	67%	70%	68%	57%	66%	62%	53%	53%
		LMY (%)	IMF (%)	Shear Force (%)	Sire:	Langley Height 060073			DOB:	19/07/2016	
		1.21	-0.18	0.0	Dam:	Yanco 140036					
Accuracy (%)		61%	56%	56%							

Purchaser:**Price:****LOT 35: YANCO 160035**

Lot	ID	BWT (kg)	WWT (kg)	PWWT (kg)	PEMD (mm)	PFAT (mm)	PWEC (%)	Carcase Plus	Lamb 2020	EQ	LEQ
35	160035	0.13	8.2	13.9	2.3	-0.8	-39	197	114.6	137.8	141.1
Accuracy (%)		65%	67%	68%	70%	68%	59%	67%	63%	57%	57%
		LMY (%)	IMF (%)	Shear Force (%)	Sire:	Langley Heights 060073			DOB:	21/07/2016	
		3.13	-0.50	0.9	Dam:	Yanco 150035					
Accuracy (%)		62%	61%	59%							

Purchaser:**Price:****LOT 36: YANCO 160118**

Lot	ID	BWT (kg)	WWT (kg)	PWWT (kg)	PEMD (mm)	PFAT (mm)	PWEC (%)	Carcase Plus	Lamb 2020	EQ	LEQ
36	160118	0.17	8.8	12.8	1.9	-0.9	28	191	111.1	134.9	132.7
Accuracy (%)		60%	63%	63%	66%	64%	47%	61%	56%	39%	39%
		LMY (%)	IMF (%)	Shear Force (%)	Sire:	Yanco 150006			DOB:	8/08/2016	
		3.49	-0.41	1.3	Dam:	Yanco 120106					
Accuracy (%)		54%	40%	39%							

Purchaser:**Price:**

LOT 37: YANCO 160137

Lot	ID	BWT (kg)	WWT (kg)	PWWT (kg)	PEMD (mm)	PFAT (mm)	PWEC (%)	Carcase Plus	Lamb 2020	EQ	LEQ
37	160137	0.00	6.6	11.2	2.1	-0.2	8	179	110.4	136.2	135.6
Accuracy (%)		57%	62%	62%	66%	63%	50%	61%	56%	41%	41%
		LMY (%)	IMF (%)	Shear Force (%)	Sire:	Yanco 150043			DOB:	22/08/2016	
		1.50	0.10	-1.4	Dam:	Yanco 120058					
Accuracy (%)		54%	42%	42%							

Purchaser:**Price:**

Mode of Sale

Helmsman Buying System

The first Helmsman sale was conducted in 1990 by its originator Mr. Bruce Milne of "Helm View" Hereford stud, Coleriene Vic and was voted an outstanding success by buyers, and has now spread to other states. This method of purchasing livestock has earned the name of the "Buyer Friendly" sale.

THE BENEFITS TO INTENDING PURCHASERS

1. You have more time to consider lodging a bid. You can place genuine bids on any sheep of your choice at any time during the sale period.
2. You have the opportunity to re-assess each lot during the sale period without any pressure to make an instant decision.
3. You take home ram/s you want, irrespective of the lot order.
4. You may use the buyers suggested price guide, which is based on measured production merit to give you a good estimate of each rams genetic worth in relation to other rams.
5. If you are considering buying a number of rams, "HELMSMAN" will give you a better chance to average your purchase costs in order to meet your total budget.

HOW "HELMSMAN" WORKS

- On arrival intending purchasers register at the bid table and receive a buying number
- All rams are displayed for your inspection as usual, with relevant information provided in the catalogue.
- When the sale commences all the ram lots are in the market simultaneously. You may bid on any ram lot/s, regardless of lot number, by filling in a card and handing it to the receptionist at the bid table, or to a "runner"

YANCO WHITE SUFFOLK BID CARD

Lot Number	
Bid Value	\$
Rams minimal bid increments of \$25	
Buyer Number	

- You may open bidding on any lot(s) and bids are in multiples of \$25
- Bids are recorded with the Buyer's number on a large board (Helmsman sale board) adjacent to the sheep display area. You can bid on any number of rams / lots at once and see at glance whether your bid still stands or has been over bid.

Yanco White Suffolks SALE BOARD				
Lot Number	1	2	3	4
Bid Value				
Bidders Number				

- There is no pressure to commit yourself to another bid, and if your "first" choice ram goes beyond your limit, you can still bid on another ram in the sale.
- A bid once submitted and recorded cannot be retracted, and a person submitting such bid will be responsible for it until it is overbid.
- The sale will remain open for a minimum of 30 minutes. A bid registered in the last 1 minute will result in a 1 minute extension of selling time. Any further bids trigger the same process until a full 1 minute "No bid" period concludes the sale.

NB: The approximate sale time is 60 minutes: i.e. 30 minute sale open and approximately 30 minutes in the last minute trigger section until 1 minute of "no bids"

DISCLAIMER: All the information contained in the catalogue is supplied in good faith. However, the correctness, reliability and usefulness cannot be fully guaranteed and therefore should only to be used as a guide.

How to Maximise the Potential from your White Suffolk Rams

These Yanco White Suffolk rams have been recently checked by a veterinarian and are free of disease but are still actively growing. On arrival home we suggest they are kept away from older rams to avoid any risk of injury from fighting.

YEAR ROUND MANAGEMENT

- Maintain weight within \pm 10 Kilograms of the rams individual optimum weight .(i.e. 100 Kilograms) and a fat score of 3 all year round. Thus this ram should stay between 90 – 110 Kilograms. Over fat rams are more prone to breakdown due to excessive weight on limbs and are less mobile around the paddock.
- Shearing rams 8 - 10 weeks prior to joining is recommended. Shearing too close to joining can be detrimental to semen quality in hot weather, as the fleece protects the animal against high radiant temperatures.
- Ringing around the pizzle is warranted especially if belly wool is burry.
- Ensure rams are drenched (with an effective drench) at strategic times along with the rest of the flock.
- Maintain an annual booster vaccination of 6 in 1.
- Keep rams feet trimmed if necessary to reduce the risk of lameness or foot abscess. A ram with feet problems will seek out and mount ewes less actively than normal.
- Jetting ram on the poll during fly season may help to avoid strike and losses.
- Avoid handling of rams in such a way they are “tonguing” within 6 weeks before mating as this may cause reduced fertility. These practices include; excessive speed in moving the rams or limited rest periods especially in hot weather, shearing, crutching and foot trimming.

PRE-MATING MANAGEMENT

- Carry out a pre mating physical examination prior to mating to ensure there are no problems with feet, teeth, testicles, penis and scrotum
- Supplementary feeding of rams 6 - 8 weeks prior to joining can have a marked effect on the semen quality and volume. Feeding lupins approximately 0.5 - 1 Kg / head / day after an initial introduction program should be plenty to achieve a result.
- Ideally ram should be in condition score 3.5 - 4 prior to joining.
- If joining rams after a long dry spell without green feed, supplementation with vitamin A may be necessary 8 weeks prior to joining and just before mating.
- Yanco White Suffolk rams can be safely joined at 1.5 - 2 % unless the geography, pasture availability, paddock size and high ambient temperatures require an increase in the ram percentage. The optimum joining period is for 2 cycles: that is five weeks. Longer joining period may be required for autumn drop lambs. e.g. 8 weeks
- If possible, do not mate old rams and young rams together because of domination. Also, mate older rams with maiden ewes and young rams to older ewes

We hope the above information helps you to get the best from your Yanco White Suffolk rams. For more detailed information please don't hesitate to ask.

Using LAMBPLAN to compare individual animals

The table below allows the comparison of individual rams against the performance of all other 2016 drop terminal Sire animals measured on Lambplan irrespective of breed.

Percentile bands for all Terminal sires animals born in 2016

Percentile Band	BWT	WWT	PWWT	PFAT **	PEMD	PWEC *	Carcass Plus	LAMB 2020	LEQ
0	-0.79	15.3	24.2	-2.5	5.1	-85	254.8	120.8	170.7
1	-0.54	11.6	17.9	-1.6	3.5	-61	217.7	116.6	146.8
2	-0.49	11.2	17.3	-1.4	3.3	-56	214.1	116.0	144.3
3	-0.45	11.0	17.0	-1.4	3.1	-53	211.9	115.6	142.6
4	-0.41	10.8	16.7	-1.3	2.9	-50	210.2	115.3	141.4
5	-0.37	10.7	16.5	-1.3	2.8	-48	208.9	115.0	140.5
10	-0.02	10.2	15.7	-1.1	2.6	-41	203.9	114.2	137.6
20	0.14	9.6	14.8	-0.9	2.2	-34	197.4	113.2	134.1
30	0.22	9.2	14.1	-0.8	1.9	-29	192.5	112.5	131.5
40	0.27	8.8	13.5	-0.7	1.7	-24	187.9	111.8	129.3
50	0.32	8.4	12.8	-0.6	1.5	-19	183.1	111.2	127.2
60	0.36	7.9	12.1	-0.4	1.3	-13	177.5	110.4	125.0
70	0.40	7.3	11.2	-0.3	1.0	-8	170.9	109.5	122.7
80	0.45	6.6	10.0	-0.1	0.8	0	162.8	108.5	120.1
90	0.51	5.4	8.4	0.1	0.4	11	153.0	107.2	117.0
100	1.02	-3.2	-3.9	2.6	-2.6	104	88.3	98.5	94.2

⋮ Dotted areas are more favourable for Superfine / Fine Merino ewes

■ Shaded values are more favourable

* Lowest values more favourable

** Varies with the genetic potential of the dam, target market specifications and your properties production system.

For Example: Lot Number 1: YANCO 160010

Lambplan Characteristics	ASBV's	Percentile Band
Birth weight	0.12	Lowest 20%
Weaning Weight	11.0	Highest 2%
Post Weaning Weight	16.6	Highest 5%
Post weaning fat	-0.6	Lowest 50%
Post Weaning Eye Muscle Depth	1.5	Highest 50%
Post Weaning Worm Egg Count	-18	Highest 60% (or worst 40%)
Carcass Plus	204	Top 10%
LAMB 2020	114.7	Top 10%
LAMB2020 Eating Quality Index	140.0	Top 10%



About Superwhites:

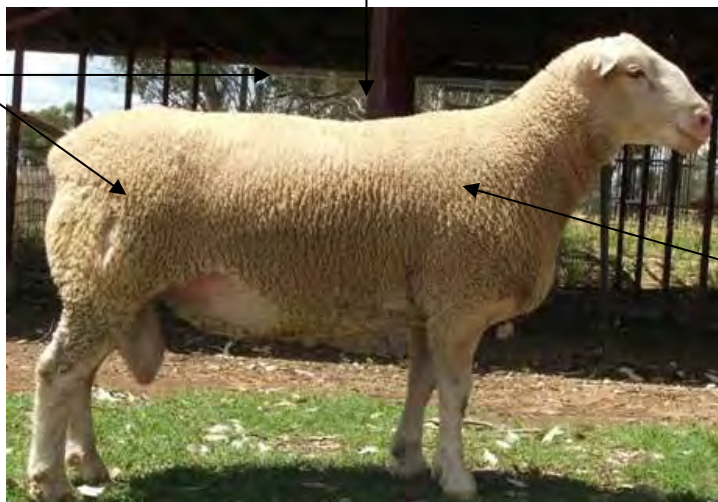
- The SuperWhites genetic improvement group was formed in 1995 and comprises 20 members across Australia
- The group has a strong commercial focus and is committed to producing the highest performing White Suffolk rams in Australia
- The group select rams that perform in the paddock under commercial conditions
- The group identify the best genetics in Australia each year and use these within member flocks
- Collectively the group represent 5,000 breeding ewes and produces around 15% of Australia's White Suffolk rams

Contact your local SuperWhites Breeder for
the highest performing White Suffolk rams:

YANCO WHITE SUFFOLKS

Rams are selected for muscling in the loin and leg. They are the most expensive cuts.

Rams are bred for high growth. After all, weight is what you get paid for!



Rams are bred from the best genetics in Australia and then performance tested to identify the best

<http://www.whitesuffolk.org.au/superwhites/index.htm>



ENROLMENT INFORMATION

YEAR 7

Applications need to be lodged **on line** with the Selective Schools Unit in the November when students is in Year 5

Selective Schools Test is in March of Year 6 and offers are made in June of Year 6

YEARS 8 TO 11

Applications are made **direct** to the school and are available in June each year.
Interviews are held in July - August

TRANSITION PROGRAM

All students who have accepted places for the coming year are invited to come to YAHS with their parents in late November to participate in the Transition Program. This involves the student spending 3 days and 2 nights at the school meeting their peers and learning about how the school and hostel operate.

OPEN DAY

9.30am till 2pm
Monday 26th February 2018
(Tours at other times by arrangement)

For all enrolment details please contact the school
02 69 511 500



2016 Year 10 Animal Management marking lambs



Ella Guessing (Year 10 Animal Management) and Zara Carlson (Year 11 Primary Industries) on 2017 Lambing duty



Year 10 Animal Management weighing and vaccinating the rams

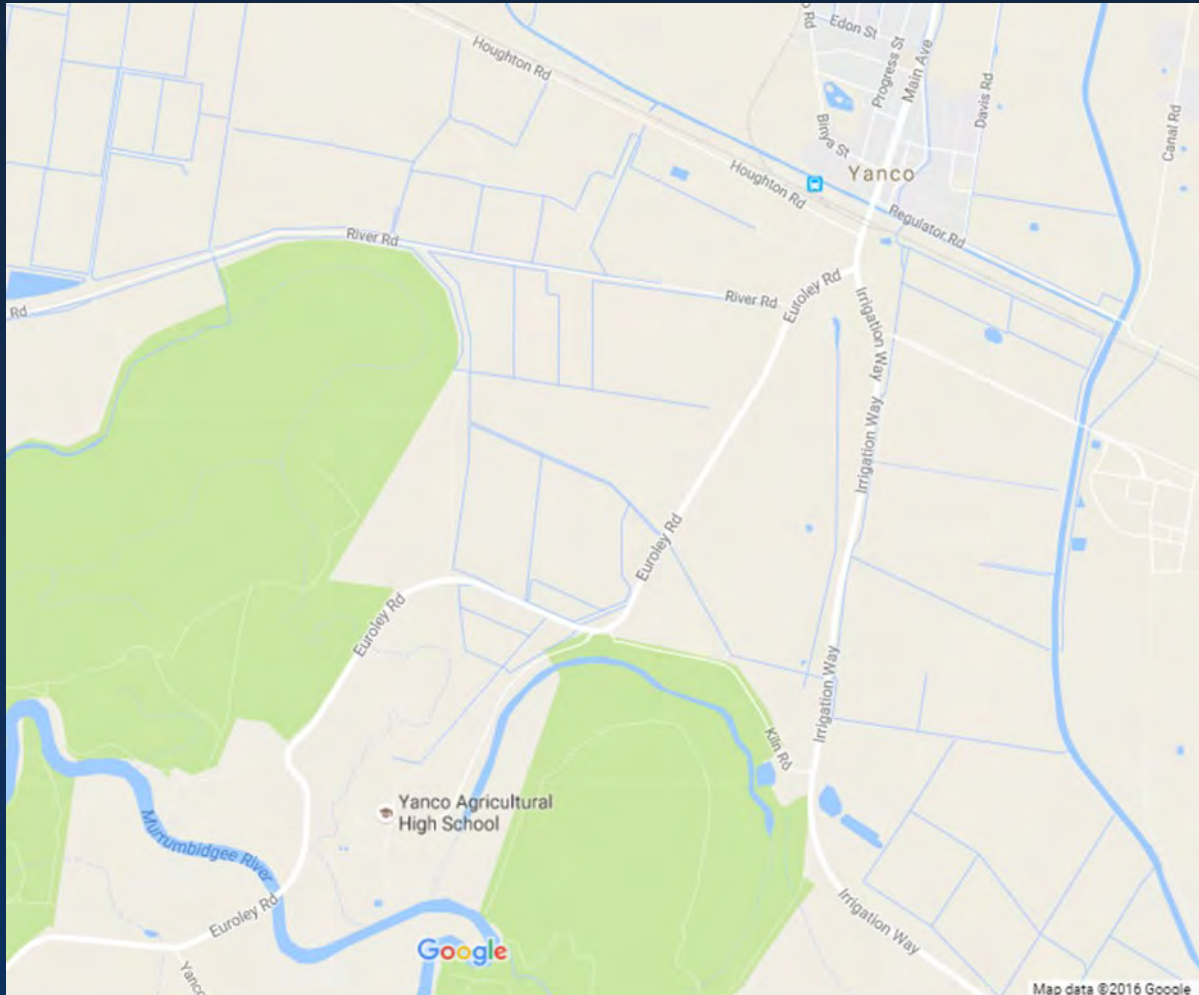


Year 12 Agriculture students viewing the Artificial Insemination process with David Kennett from Genstock

YANCO WHITE SUFFOLKS

DIRECTIONS

Yanco Agricultural High School is located 10 kilometres from Leeton and 24.4 kilometres from Narrandera on Euroley Road. It can be reached from Leeton by travelling down Irrigation Way, through Yanco and turning right onto Euroley Road, then turning left after approximately 2km at the first entrance to the School.



Special thanks goes to the Staff and Students of Yanco Agricultural High School, Murray Long of Clearview Consulting, Tim Hutchinson from Breed and Hutchinson and Dominic O'Mahoney from Elders Narrandera for assisting with the preparation and running of the sale.